

Where exactly is Sperry?

You know how it goes. You tell someone that you work at Sperry and they reply, "Oh, you mean that building by Highway 36?" or "Is that out there off Yankee Doodle Road?" They may guess right, but most often, you have some explaining to do.

The number and location of Sperry facilities in this area is apt to confuse both employees and non-employees alike. In this region, which includes the Twin Cities area, Jackson, Minn., and Clear Lake, Iowa, Sperry owns or leases 32 separate buildings totaling more than 3.8 million square feet.

If you've ever wondered where all these facilities are located, or what they look like, your questions are now answered. On pages 4 and 5 of this issue you will find photographs of the 17 locations of Sperry's facilities in this region. However, notice that none of the photographs are identified. That's your job. Test yourself to see how many facilities you can identify using the names and descriptions printed below. There is space under each photograph to write in the name. If you get stumped,

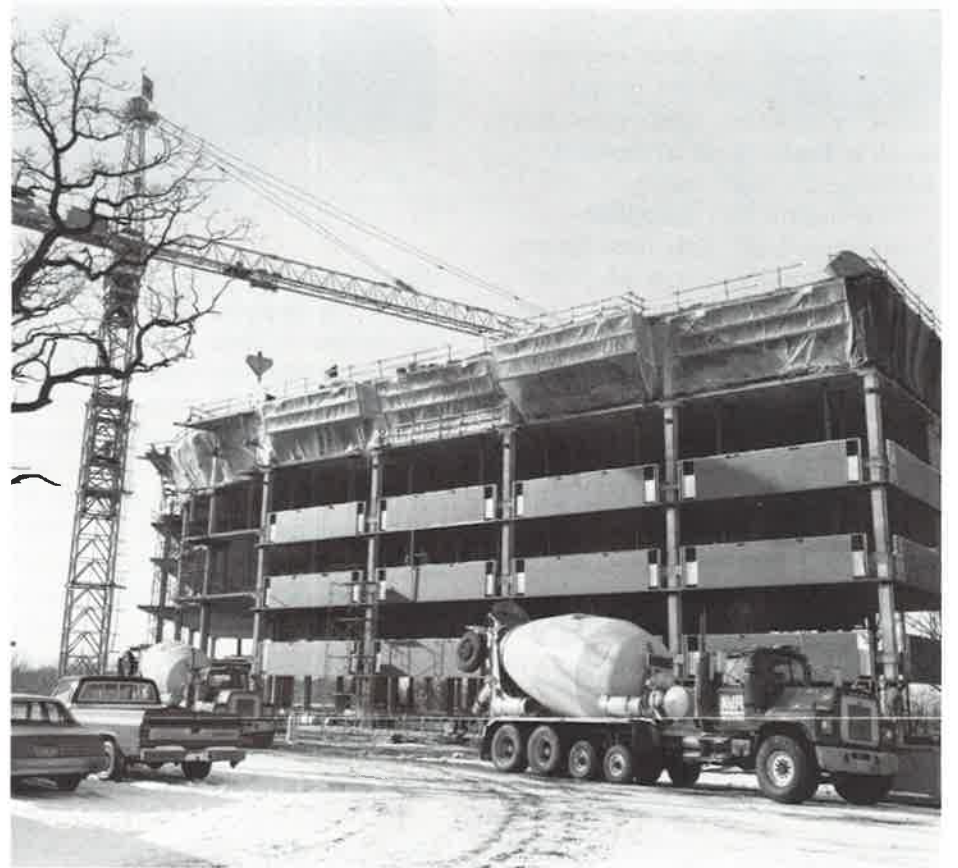
the answers are printed on page 6. Good luck! (Note: employee counts are approximate.)

ATC Operations — 1385 Mendota Heights Road, Mendota Heights. Air Traffic Control operations for Systems Management Group; 176 employees; 31,000 square feet.

Bloomington Learning Center — 2001 Killebrew Drive, Bloomington. This education center serves both employees and customers of Information Systems Products and Technology; 23 employees; 13,500 square feet.

Clear Lake — 1401 Sixth Ave. S., Clear Lake, Iowa. Conducts assembly and test of the 1100/90 mainframe computer for Information Systems Products and Technology; 840 employees; 140,000 square feet.

Corporate Square (B,C,D & E) — Neil Armstrong Blvd/Apollo Road, Eagan. Nine hundred fifteen Computer Systems Division employees; 319,000 square feet.



When completed, the new CSD headquarters building located at the intersection of Interstate 494 and Pilot Knob Road, will be one of Sperry's more prominent facilities.

Eagandale Business Campus — 1270 Eagan Industrial Road, 1285 and 1301 Corporate Center Drive, Eagan. Education and training for CSD employees, also Semiconductor Division; 611

employees; 167,500 square feet.

Earle Brown — 6120 Earle Brown Drive, Minneapolis. Information Systems Products and Technology; 255 employees; 80,000 square feet.

Continued on page 7

Third quarter income up 10 percent

Sperry Corporation results for the third fiscal quarter ended Dec. 31, 1985 show income from continuing operations of \$67.9 million, or \$1.20 per share, up 10 percent from \$61.7 million, or \$1.10 per share, for the comparable quarter last year. Net income for the third fiscal quarter was the same as income from continuing operations and rose 11 percent from \$61.2 million, or \$1.09 per share, for the comparable quarter last year.

Third quarter revenue was \$1,402.5 million, up 7 percent from \$1,306.4 million last year.

Last year's results included an after-tax charge of \$12.7 million, or \$.23 per share, in connection with the resolution of an arbitration proceeding initiated in 1981 with the Government of Israel. Before this charge, income from

continuing operations declined 9 percent from last year.

Commercial computer opera-

tions posted revenue and operating profit gains of 14 percent and 11 percent for the quarter

and 24 percent and 26 percent for the nine months ended

Continued on page 3

Consolidated Summary of Income (in millions of dollars)						
	Third quarter ended Dec. 31			Nine months ended Dec. 31		
	1985	1984	Change	1985	1984	Change
Revenue	\$1,402.5	\$1,306.4	+ 7.4%	\$3,939.7	\$3,384.9	+ 16.4%
Income from continuing operations	\$ 67.9	\$ 61.7	+ 10.0%	\$ 164.7	\$ 181.2	-9.1%
Income (loss) per share	\$ 1.20	\$ 1.09		\$ *(1.20)	\$ 3.26	

*A net loss of \$68.5 million, or \$1.20 per share was sustained reflecting a loss of \$232.2 million, or \$4.10 per share, from discontinued operations of the Sperry New Holland farm equipment business.

Company seeks partnership with suppliers

High quality finished products can only be made from quality components and materials. For that reason, Information Systems Products and Technology in Roseville held a special "Supplier Awareness Day" on Jan. 10 for 100 of its top suppliers.

The day-long event began with presentations from Information Systems Products and Technology management and concluded with tours of the Roseville manufacturing facilities.

Doug Tanner, director, Procurement, set the tone for the day when he told the group, "Quality, quality, quality — these are the three most important words you'll hear today."

The theme for "Supplier Awareness Day" was that Sperry and its suppliers must be "Partners In Quality." In order to continuously improve product quality and remain competitive, Information Systems Products and Technology management is making dramatic changes in the manufacturing process, and they want their suppliers to be in harmony with those changes.

One of those changes is the introduction of Statistical Process Control (SPC). SPC is a tool that permits data from a process to be analyzed and interpreted,



"Supplier Awareness Day" at Roseville began with the attendees listening to presentations about quality. Later, they gave their feedback to management in small group discussions and then toured Roseville's manufacturing facilities.

allowing a complete understanding of the process. SPC provides the means to find, define and fix problems that can occur in the manufacturing process.

"SPC has been adopted in 85-90 percent of our work centers, and now we want to pass this tool on to our suppliers," said Don Elliott, manager, Purchased Material Quality.

Once suppliers have implemented their SPC programs, the goal of Information Systems Pro-

ducts and Technology is to accept products and supplies directly into manufacturing without inspection (Dock to Stock) or on a Just-In-Time (JIT) delivery basis. These methods require a close working relationship between Sperry and its suppliers, according to Elliott.

Changes in the Sperry/supplier relationship include longer-term commitments to fewer suppliers and the development of a cooperative, non-adversarial environment involving Sperry and

its suppliers. Part of the "Supplier Awareness Day" was spent in small group discussions during which attendees were invited to share their concerns and reactions about how Sperry and its suppliers together can implement this new relationship.

Participants responded favorably to the event. Thomas Coughlin, vice president of Airfax, wrote, "I have attended many supplier awareness workshops but I honestly feel yours was one of the best."

Latimer receives Sperry Community Involvement Award

St. Paul Mayor George Latimer is the recipient of the 1986 Community Involvement Award presented by Sperry Corporation.

This award, which was presented for the first time last year, recognizes an individual who has demonstrated high idealism, vision, enthusiasm and selflessness. As part of the award, Sperry donates \$1,000 to the non-profit organization of the recipient's choice.

Latimer's award was presented to him Jan. 25 at a special community involvement recognition dinner held in St. Paul and hosted by Sperry. The annual dinner is intended to acknowledge the spirit of community involvement that exists in the Twin Cities. Guests included civic and business leaders, government, education and media representatives, and key Sperry customers.

In presenting Latimer with his award, Jack Nichols, vice-president, Communications, highlighted some of the mayor's contributions to the community. He referred to Latimer as "one who is genuinely concerned about the problems of our

society...the homeless, the hungry, the illiterate...and does something about it. And who is concerned about this city and all the people who live and work here."

Latimer has played an instrumental role in several economic development programs such as the redevelopment of Lowertown and the public-private development of Energy Park. He has encouraged downtown revitalization through projects such as Town Square and the new Minnesota World Trade Center. And he has championed efforts in the areas of energy conservation, small business and neighborhood revitalization.

In summing up his remarks, Nichols referred to comments made recently by Dr. Robert Featherstone, associate dean at Bethel Seminary. Dr. Featherstone was discussing the impressive monuments in St. Paul such as the Ordway Theater and Galtier Plaza when he said, "As significant as they are, in the sight of God, Mr. Latimer is to be commended most highly for his efforts to alleviate the plight of the poor and the needy."



St. Paul Mayor George Latimer — 1986 recipient of Sperry's Community Involvement Award.

No more group (name)

Recent organizational changes have precipitated corporate identity changes. The Information Systems Group has been replaced by five operations: Information Systems Commercial Marketing, Information Systems Products and Technology, Integrated Systems, and Customer Services. The name "Information Systems Group" should no longer be used. All documenta-

tion, sales promotion materials, advertising, a/v production, etc. should refer to Sperry Corporation and use the Sperry logotype. In most applications, where the present guidelines permit the use of a group name, the new organizational name ("Information Systems Products and Technology, Integrated Business Systems," etc.) should be substituted.

Third quarter results

Continued from page 1
Dec. 31, 1985.

For the quarter, defense and aerospace operations posted revenue and operating profit declines of 1 percent and 16 percent, primarily reflecting the effects of a strike at the Great Neck, Long Island facilities. For the nine months ended Dec. 31, 1985, revenue rose 6 percent and operating profit declined 8 percent.

Gerald G. Probst, Sperry chairman and CEO said, "We see continued growth in the fourth quarter for our commercial computer business despite continued weakness in the computer industry. We have a healthy defense and aerospace backlog and continue to make progress overcoming production problems."

Orders for commercial computers were up modestly for the quarter and nine months while backlog declined from a year ago. Orders for defense and aerospace business declined while backlog rose modestly.

For the nine months ended Dec. 31, 1985, income from continuing operations was \$164.7 million, or \$2.90 per share, down

9 percent from \$181.2 million, or \$3.27 per share, a year ago, but up 7 percent before nonrecurring items last year which included a tax reversal, a writedown of the investment in Trilogy Limited, and the arbitration proceeding charge. Revenue for the nine months was \$3,939.7 million, up 16 percent from \$3,384.9 million for the corresponding period of fiscal 1985.

For the nine months ended Dec. 31, 1985, a net loss of \$68.5 million, or \$1.20 per share was sustained, reflecting a loss of \$232.2 million, or \$4.10 per share, from discontinued operations of the Sperry New Holland farm equipment business. The nine-month net loss contrasted with net income of \$180.8 million, or \$3.26 per share, for the comparable period last year.

"Overall, we expect that fiscal 1986 pretax income from continuing operations will be well ahead of fiscal 1985. After-tax income from continuing operations is expected to be modestly lower than fiscal 1985 net income, which included the nonrecurring \$64.0 million tax reversal," Probst said.



Lights, camera, action!

One of Sperry's finest recently starred in a multi-image video presentation featuring technology and how it affects society. SPARCS (Sperry Automated Retrieval and Carrying System), a familiar sight at the Shepard Road facility, is shown being filmed by George Welles, left, a producer/director from Northwestern Bell and David Boe, center, a freelance cinematographer. Larry Pinska, Visual Communications, CSD, assisted the film makers. The three-to-five minute video was the opening presentation for Northwestern Bell's Minnesota Direct Dialogue conference held Feb. 11. The conference enabled Northwestern

Bell customers to share their ideas and concerns about the telecommunications industry. SPARCS, which began operating at the Shepard Road facility in March 1983, carries work orders such as printed circuit boards and components from the crib area to three assembly floors. The battery-operated vehicle tracks an ultra-violet sensitive floor coating with ultra-violet lights located on the bottom of the machine. It makes six automatic stops on its loop and even has the ability to open and close doors. SPARCS may not earn an academy award, but his performance is certainly appreciated by employees at Shepard Road.



by Thom Hensch

CAT scanners. What are they? What do they do? Why are they used? These are questions that are often asked. The scanner, using a technique called computed tomography (CT), makes it possible to obtain an X-ray image of a cross section of any region of the body as it would be seen looking down through the patient from head to foot. These images, or scans as they are called, allow the physician to pinpoint abnormalities that until now have been fuzzy or even undetectable on conventional X-ray films or by other special radiographic procedures.

This is how it works. The patient lies on a stretcher-like movable table. An arch-shaped stationary frame houses the X-ray tube and radiation detector. The table is positioned so that the region of the patient's body to be examined is centered in the arch-shaped opening of the frame. Then, as the X-ray tube and detector move in synchronism around the patient, a narrow X-ray beam is transmitted through a transverse section (slice) of the body. The detector records the amount of radiation that passes through the body slice and passes this data onto a computer for storage.

The table then positions the patient so that the next slice can be scanned. This procedure is repeated until the body region of interest has been viewed from many different angles. During the procedure, thousands of X-ray intensity readings are recorded and fed continuously into the computer. From this data, the computer calculates the relative densities of the tissues within each slice. These measurements of tissue densities are used to construct an image of the slice which is displayed on a television monitor. The television

image may then be photographed for a permanent record. The number of slices, slice thickness and the distance between slices is determined by the region of the body being scanned.

Although the CT scanner, like conventional X-ray equipment, produces a two-dimensional image, the image is a cross section of the body instead of a projection. Therefore, by constructing several sections, it can give three-dimensional information from the two-dimensional image. This provides a more realistic representation of body anatomy than the conventional X-ray image.

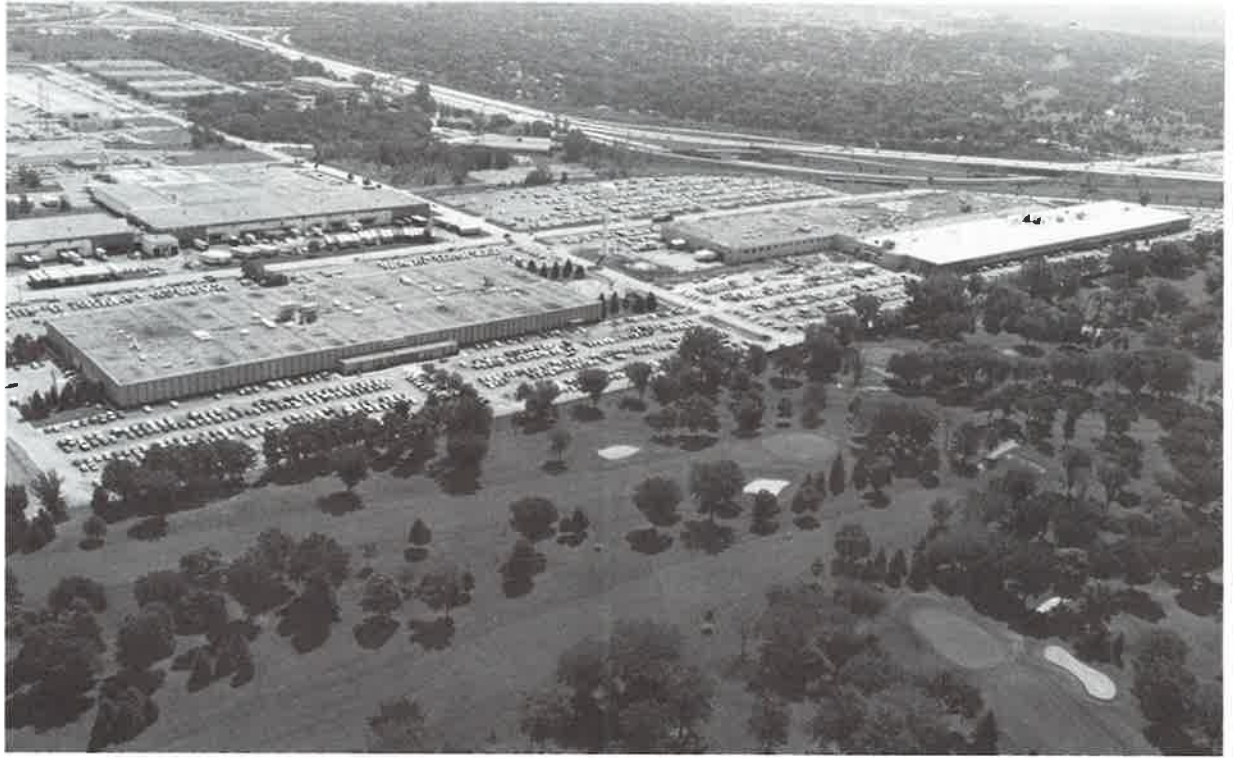
Why is CT used? The CT scanner is superior to conventional X-ray techniques. It is far more sensitive to differences in tissue densities and therefore can distinguish between tissue structures of similar but not identical density. For example, a conventional X-ray image will show that the heart may be enlarged. If the physician wants to see if the enlargement is within the heart muscle or if there is a tumor overlying the heart, the CT scanner will give this precise information.

The CT scanner will detect abnormalities in the brain and spinal cord cavities, masses in the kidneys and pancreas, lymph node irregularities, breast tumors and heart abnormalities. It will also distinguish between abscesses, cysts and tumors; distinguish benign tumors from malignant tumors; spot cancer before it can be detected by other means and detect some post-surgery complications. Some of this information otherwise would have been revealed only by exploratory surgery or autopsy.

From the patient's point of view, there are advantages to having a CT scan done. It offers the physician a means by which to explore inside the body in a painless manner with no side effects. In many cases, the CT procedure eliminates the need for exploratory surgery and eliminates the pain and discomfort associated with some of the other more complex radiographic procedures or studies. CT scans can also be done in a relatively short time period with no hospitalization of the patient required.

Thom Hensch is a Health Physicist, Employee Health Programs, Computer Systems Division.

SPERRY
SPERRY
SPERRY



E.



A.



F.



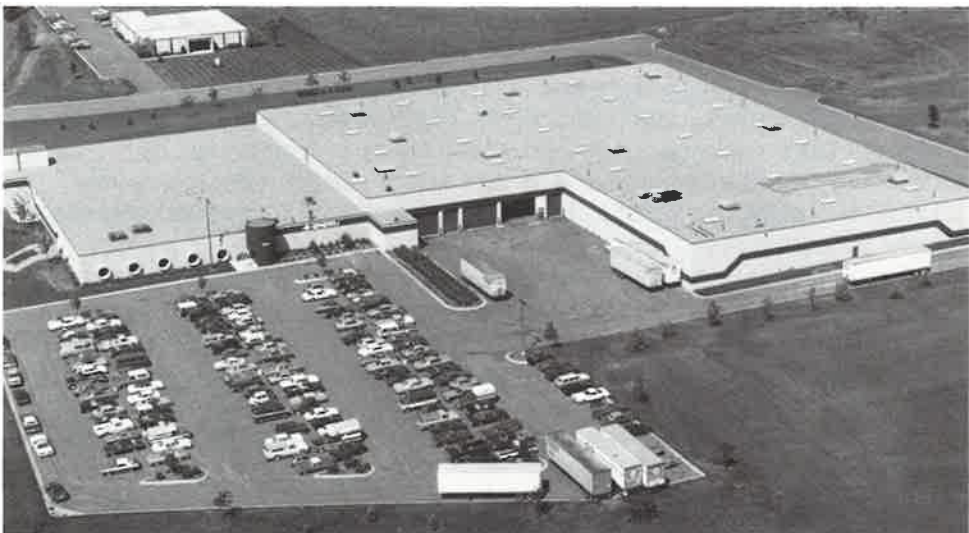
B.



G.



C.



D.



H.

*Sperry Sites
abound — can
you identify
them?*



I.



M.



J.



N.



K.



O.



P.



L.



Q.

Answers to facility photos

A — Metro Park	J — Semiconductor Headquarters
B — Earle Brown	K — Waters Edge
C — A.T.C. Operations	L — Eagandale Business Campus
D — Mendota Heights Reconditioning Center	M — Clear Lake
E — Roseville Operations	N — Bloomington Learning Center
F — Midway	O — Federal Systems
G — Shepard Road	P — Corporate Square
H — Yankee Square	Q — Jackson
I — Sperry Park	

Ready your wheels for Rolling Gophers

The wheels are in motion for the second annual Rolling Gophers Sperry night Feb. 22 at 6:30 p.m. at Central High School in St. Paul. Come and join fellow Sperry employees and their families for a night of exciting wheelchair basketball with all proceeds going to the athletic programs of Courage Center, a non-profit organization that provides medical and vocational rehabilitation and recreation programs for people with physical disabilities.

Each of four Sperry teams will challenge the Rolling Gophers to a quarter of wheelchair basketball, followed by an exhibition game between members of the Rolling Gophers team. Half-time entertainment will include an archery demonstration, and the St. Paul Clown Club will also be on hand throughout the evening.

Tickets for this event are avail-

able through Roseville Employee Services, Roseville Public Relations Department, CSD Employee Programs and from Sperry team members. Prices are \$2 for adults and \$1 for children 6-12. Children under 6 can attend free. Each ticket you purchase is an entry in the Rolling Gophers Sperry night sweepstakes; you need not be present to win.

Sweepstakes prizes include local hotel weekend packages, tickets to the Canadian Brass at Orchestra Hall, Ronnie Milsap at the Carlton Celebrity Room, the Minnesota Science Museum and Omni Theater, Old Log Theater, Guthrie Theater and the Har-Mar Movie Theaters, and gift certificates to area restaurants. The grand prize is two round-trip airline tickets to anywhere in the continental U.S., courtesy of Rosenbluth Travel.



CSD Employee Programs

Sperry **Intramural Softball** team rosters are due by Friday, March 28. CSD employees should send rosters to Employee Programs, M.S. U1H23. Late or incomplete rosters not accepted.

Zuhrah Shrine Circus tickets on sale at all CSD ticket locations. Performances at Minneapolis Auditorium, March 1 at 7 p.m. and March 2 at 5:30 p.m.

Tickets for **Walt Disney's World on Ice** at the Met Center available at all ticket locations. Performances are March 21, 7:30 p.m.; March 22, 11 a.m.; March 29, 11 a.m.

Fanny Farmer gift certificates are available for \$7 — a 30 percent savings.

North Star tickets available: Sunday, Feb. 23 vs. Toronto Maple Leafs; Saturday, March 1 vs. New York Islanders; Tuesday, March 11 vs. Edmonton Oilers; Saturday, April 5 vs. Detroit Red Wings.

Sperry **Summer Fishing Contest** will have three payoff periods this year and a grand prize for each category. Entry fee, \$1. Watch bulletin boards for more information.

Red Cross **Bloodmobile** will be at the following locations: Sperry Park, Feb. 20; Midway, Feb. 21; Shepard Road, Feb. 24 and 25; Corporate Square, Feb. 26.

Abdallah Easter candy delivery schedule:

Midway	March 11	10 - 11 a.m.
Shepard Road	March 11	2 - 3:30 p.m.
Sperry Park	March 12	10 a.m. - noon

Orders must be received by Employee Programs, M.S. U1H23 by Monday, Feb. 24. No late orders.

Margaret Baker's Cheesecake orders taken March 12; delivery March 25 and 26. Vanilla, \$5.75; flavored, \$7.

Roseville Employee Services

Tickets available at Employee Services for **Walt Disney's World On Ice** at the Met Center. Watch bulletin boards for dates and times.

North Star tickets available: March 1 vs. New York Islanders; April 5 vs. Detroit Red Wings.

Red Cross Bloodmobile will be at the following locations: March 14, Water's Edge; March 17, Building 3 and Earle Brown; March 18, Building 3; March 19 and 20, Building 1; March 21, Building 4. Watch for payroll stuffer sign-up cards or call Employee Health Services, 635-5347, to make an appointment.

Sperry **Summer Fishing Contest** will have three payoff periods this year with a grand prize for each category. Contest entry fee, \$1. Watch bulletin boards for more information.

Retirees invited to join V.I.P. club

If you are a retired Sperry employee, but have not yet joined Sperry's V.I.P. (retirees') Club, perhaps you should consider joining now.

All club members can attend regular meetings and take part in activities such as an annual picnic. Members also receive the monthly V.I.P. Newsletter filled with information about club activities and fellow retirees. The cost to join the V.I.P. Club is a nominal \$2 per person for an

entire year — a small price to pay to stay in touch with what's going on. Even if you have moved from the Twin Cities area, the newsletter can be like a letter from home every month.

If you are interested in joining the V.I.P. Club and would like to receive the V.I.P. Newsletter, send your dues with your name and address to: V.I.P. Club, M.S. S1D11, P.O. Box 64525, St. Paul, MN 55164.

**Classifying
Internal Documents —
The New and the Old**

All Sperry business information is proprietary. Highly sensitive information is marked...

Sperry Restricted

SPERRY

Sperry locations

Continued from page 1

Federal Systems — 2535 Pilot Knob Road, Mendota Heights. Information Systems Federal Government Marketing; 25 employees; 11,000 square feet.

Jackson — Industrial Parkway, Jackson, Minn. Manufactures printed circuit assemblies for products of Information Systems Products and Technology; 400 employees; 38,000 square feet.

Mendota Heights Reconditioning Center — 2465 SD. Lexington, Mendota Heights. Refurbishes computer equipment and reclaims precious metals and obsolete parts; Information Systems

Products and Technology; 86 employees; 127,000 square feet.

Metro Park — 3001 and 3050 Metro Drive, Bloomington. Information Systems Commercial Marketing, customer engineering and support groups at Metro I, Technical Services Division headquarters at Metro II; 410 employees; 85,000 square feet.

Midway — 1902 W. Minnehaha, St. Paul. Manufacturing plant for the Computer Systems Division, 264 employees; 164,000 square feet.

Roseville Operations — 2276 Highcrest Road, Roseville. Information Systems Products and

Technology; developing, manufacturing and supporting commercial computer systems, primarily Sperry's large-scale series 1100 systems; four buildings; 5,460 employees; 1,365,900 square feet.

Semiconductor Headquarters — 1500 Tower View Road, Eagan. Information Systems Products and Technology; producing the latest in semiconductor technology; 637 employees; 240,000 square feet.

Shepard Road — 2751 Shepard Road, St. Paul. Manufacturing plant for Computer Systems Division; 2,300 employees; 324,000 square feet.

Sperry Park — 3333 Pilot Knob Road, Eagan. Defense Products

Group headquarters, Computer Systems Division headquarters; designing and producing custom computer and information handling systems for specialized shipboard, airborne, and land-based applications; 2,157 employees (398 are Information Systems Products and Technology employees); 520,000 square feet.

Waters Edge — 1500 W. County Road B-2, Roseville. Information Systems Products and Technology, software development; 494 employees; 100,000 square feet.

Yankee Square — 3410 Federal Street, 3459 and 3470 Washington Drive, Eagan. Computer Systems Division; 389 employees; 61,800 square feet.

SERVICE AWARDS

TWIN CITIES DPG

35 Years
Patrick McCarthy

30 Years



Deane Free



Clarence Johnson
Lyle McCulloch
Dean Medcalf



William Neid
John Neumann
Jerome Stoffel
Arnold Troth
Andrew Urness

25 Years
Robert Baumann
Glen Dykes
Larry Fletcher
Jacques Hahn
Robert Jacoby

20 Years
David Anderson
Ronald Beeney
James Bougie
Donald Erickson
Barron Geisen
Donna Harms
Robert Hogan
Terry Hostetler
Keith Klucas
Frederick Kycek

Loren Lewis
John Lukas
Robert Matzek
Gregory Miller
Noreen Nelson
Glenn Rathgeber
Willard Sunday
Allen Stelmasik
Rose Winberg

15 Years
Gail Alsaker
Carl Boecher
Diane Bowersox
Kerry Cesar
Virginia Duenow
John Emberley
Virginia Furlong
Edward Hagy
Jacqueline Johnson
Ione McNally
George Miklasevics
Walter Nagel
Susan Nilson
Wileen Reupke
Mary Sadowski
Joanne Saiko
Richard Smasal
Mildred Willet
Gloria Wood
Gabriel Yau

10 Years
Pamela Hovland
Robert Nelson
Rolland Rasmussen
Deborah Tackaberry
Laurence Wryk

5 Years
Kelly Anderson
Paula Baron
Gordon Barr
Cynthia Beddow
Craig Cameron
Brenda Carlson
Lisa Cecchini
Irene Dzarnoski
Richard Fott
Joyce Granger
Sharon Johnson
Helen Kock
Edward Krieger
Gregory Miller
Nancy Miller
Richard O'Donnell
Susan Peters
Anita Redmond
Robert Robotka
Dale Sand
Maria Snyder
Cynthia Voelke
Morgan Yim

TWIN CITIES INFORMATION SYSTEMS

35 Years
Margaret Wong



Louis Cramer

30 Years



Herman Bergman



Marvin Brown
Joseph Connell



Carl Eckstrom
John Grow



Howard Hanson
Anthony Just
Dean Maeser
John Martin



Roger Moerke



James Montain



Norman Mundt
Jacob Oswald



Richard Paulsen



Curtis Tesmer



Lloyd Vandenberg

25 Years
James Redden
Kristen Rusten
Delano Schmidt

20 Years
Raymond Baker
Edward Clark
James Frantz
Edward Grant
Joann Grau
Walter Jahr
Gerald Johnson
Roger Konrad
Vincent Lange
Roy Lewis
Lynn Mielke
Alvina Oliver
David Quernemoen
Karen Scholfield
R. Schwientek

15 Years
Linda Anderson
Dean Haynes
Thomas Lauinger
Marlene Losie
Reinhard Meyer

10 Years
Stan Barone
Mark Churchill
Warren Erickson
Jerome Fasching
Raymond Harris
Gregory Heimann
Neil Larsen
Frank Ostermann
John Roberts
Jon Shutte
Barbara Tilford
Katharine Wicklatz

5 Years
Timothy Barry
Edward Bauer
Karen Brock
Jo Ann Kelly
Bonnie Lukes
Kathryn Martin
Robert Moeller
Jannette Paulu
Robert Reamer
Robert Rohr
John Ruhsenberger
Bruce Voigt
Er Liang Yang

TWIN CITIES SMG

20 Years
Katherine Frietag
William Lahti

CLEAR LAKE

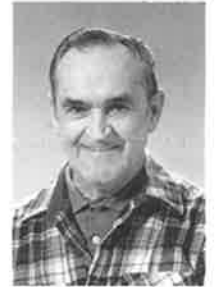
5 Years
Dianna Berghefer

JACKSON

10 Years
Serene Becker
Christine Brewington
Sharon Carter
Eulalia Grunig
Arlene Muir
Sandra Olson
Lois Poelaert
Shirley Rowe
Lucinda Schwager

RETIREES

Vivian Bressler
Mary Jane Hedlund



Norman Herron
Eugene Kaiser



Shirley Knutson



Monica Leier
Cecilia Michurski

Member, International Association
of Business Communicators

Published monthly for all Sperry
employees in the Twin Cities, Jackson,
Minn. and Clear Lake, Iowa by the
Regional Communications Depart-
ment, P.O. Box 64525, St. Paul, MN
55164-0525, Mail Station U2F22.

Staff

Bruce Behounek, 456-3518
Mary Wetschka, 456-3767

Correspondent

Judy Cognetta, 635-6563

UNISCOPE, MAPPER, SPERRYLINK,
SPERRY, and  are trademarks
of Sperry Corporation.

 This paper is recyclable.

Sperry Park, P.O. Box 64525
St. Paul, MN 55164-0525

BULK RATE
 U.S. POSTAGE
 PAID
 ST. PAUL, MN
 PERMIT NO. 1145

COMMUNITY
INVOLVEMENT


Foster Home — A young mother with some emotional problems, and her son, urgently need a foster home in the West Hennepin County area. She receives emotional support, counseling and vocational planning assistance in Hopkins three times a week. She needs periodic help with the care of her child, a supportive family environment, a room, meals and some supervision. You will receive help from professionals and financial compensation. If you can help, please call.

Caregiver Respite Volunteer Program — Volunteer needed to provide "time away" for caregivers in Ramsey County. A caregiver is a primary person responsible for the care of an elderly or disabled family member. Commitment of approximately four hours per month for six months to one year is requested. Training is offered.

Cancer Education Instructor — Provide information and public awareness for cancer-related issues to groups in metro area churches, businesses and clubs. One program presentation of one hour in length requested. Training provided.

Friend To Young Adults — Share some special time with mentally handicapped young adults and assist them in developing independent living skills and activity planning. Ongoing training and transportation reimbursement provided.

FOR MORE INFORMATION, CONTACT THE REGIONAL
COMMUNITY RELATIONS DEPARTMENT AT 456-4803
(SPERRY PARK) OR ROSEVILLE PUBLIC RELATIONS
AT 635-7775.

February 1986



Workers poured the concrete roof of the new CSD headquarters building in late January. See pages 1, 4 and 5 for a quiz about Sperry's other facilities.