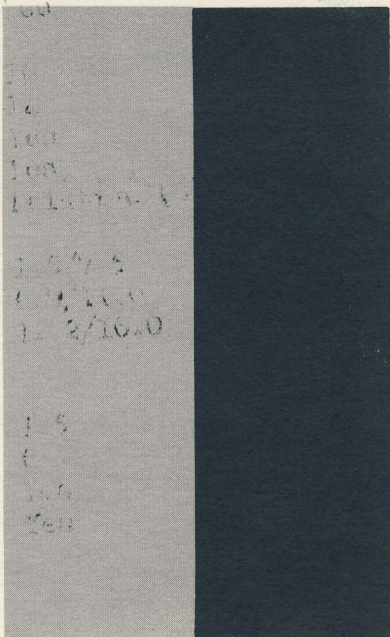


SPERRY RAND

UNIVAC

MAGNETIC TAPE UNITS 1968



FEDERAL SYSTEMS DIVISION

16
None

36
None

Yes
Yes
Yes

Yes
Yes
Yes

COMPANY PRIVATE



COMPARISON OF UNIVAC DEFENSE AND COMMERCIAL MAGNETIC TAPE

UNIVAC MAGNETIC TAPE UNITS	1840 MMTS	1540 A (RD-294)	1541	1240 A (RD-270)	1242/43/46 (RD-243)	1245/48 (MARS)	1249	1560 (NAACOL) (RD-261)	UNIS 11
DUPLEXING	Programmed	Programmed	Programmed	No	Progr. (1242/43)	No	No	No	Dual Channel
INTERFACE WORD LENGTH	18, 30 or 32	18/24/30/36	18/24/30/36	18/24/30/36	30	30	30	30	9
INTERFACE SIGNAL VOLTAGE	+3 -3 or -15	-3/-15	-3/-15	-3/-15	-15	-15	-15	-15	-3
FRAME TRANSFER RATE	15 to 60 KC	24 to 96 KC	30 to 120 KC	22.5 to 62.5 KC	14.6 to 23.6 KC	22.5 KC	3.9 to 31.2 KC	13.5 to 50 KC	8.54 to 60
WORD TRANSFER RATE	2.5 to 20 KC	4 to 32 KC	5 to 40 KC	3.75 to 20.8 KC	2.9 to 4.7 KC	4.5 KC	.79 to 6.2 KC	1.7 to 10 KC	6.4 to 60
NUMBER OF TRANSPORTS	1 or 2 per cab. 4 per control	2 per cab. 8 per control	1 per cab. 8 per control	2 or 4 per cab. 16 per control (Moonbm 4 only)	2 per cab. 2 per control (1246 1 only)	2 per cab.	2 per cab. 2 per control	2 per cab. 2 per control	1 per cab. 16 per control
MIL SPEC COMPLIANCE	Desgn. to be qualif. MIL-E-16400 MIL-E-5400	Qualified to MIL-E-16400	Desgn. to be qualif. to MIL-E-16400	Designed to MIL-E-16400	Designed to MIL-E-16400	Designed to MIL-E-16400	Designed to MIL-E-16400	Qualified to MIL-E-16400	Comm'l
SHOCK MOUNTING	Base Isolators (Cabinet encl. versn.)	Transport Frame	Transport Frame	None	Base Isolat. 1243 (Solid Base 42/46)	Base Isolat. 1245 (Solid Base 1248)	None	Transport Frame	None
CABINET SIZE	Transport: 19W x 24.5H x 9.5D (With heat exchr.) Control Unit: 19W x 8H x 11D Maint. Console: 19W x 15.5H x 11D	Basic Unit: 72H x 38W x 30D Add-on Unit: 72H x 26W x 30D	Basic Unit: 72H x 48W x 31D Add-on Unit: 72H x 35W x 31D	2-Handler: 72H x 37W x 30D 4-Handler: 72H x 60W x 30D	Water Cooled: 72H x 37W x 36D Air Cooled: 76H x 48W x 36D	Water Cooled: 72H x 37W x 36D Air Cooled: 76H x 48W x 36D		72H x 36W x 36D	Tape Cab. 63.5H x Control 63.5H x
WEIGHT	Transport 130 Control Unit 40 Maint. Cons. 65	Basic 1400 Add-on 950	Basic 1500 Add-on 1100	2-Handler 1150 4-Handler 1900	1400	1650		1500	Master Slave 50
COOLING	Air (Heat exchanger available)	Air Water 4.0gpm	Air Water 4.0gpm	Air	Water 4.8 gpm (1243) Air (1242/46)	Water 4.8 gpm (1245) Air (1248)	Water	Water 4.0gpm	Air
POWER REQUIREMENTS	Airborne: 200V, 400 Hz, 3ph Ship/Shore: 115V, 400 Hz, 3ph Transport 600W CU/Maint 300W	115V 400 Hz, 3ph 115V 60 Hz, 1ph	115V, 400 Hz, 3ph 1.2 KW Basic .4 KW Add-on 115V, 60 Hz, 1ph 2.8 KW Basic 2.8 KW Add-on	115V, 400 Hz, 3ph .6 KW 115V, 60 Hz, 1ph 3.6 KW 2-Hdlr 7.1 KW 4-Hdlr 208V, 400 Hz, 3ph (1240C, PRD)	115V, 400 Hz, 3ph 1.4 KW 115V, 60 Hz, 1ph 2.0 KW 208V, 60 Hz, 3ph .8 KW (Air-cooled blowers)	115V, 400 Hz, 3ph 1.4 KW 115V, 60 Hz, 1ph 2.0 KW	115V, 400 Hz, 3ph	115V, 400 Hz, 3ph 1.4 KW 115V, 60 Hz, 1ph 2.0 KW	
LOGIC CARD FAMILY	UYK-7	20B	20B	20B	20A	20A	20A	20A	9300
DESIGN SPEC	274-8216	SB-10110	DS 4770	DS 4661	DS 4555	DS 4615/DS 1708	DS 4634	Navships	
TRANSPORT SPEC	SB 12215 274-8215	DS 4775 V 7900917	DS 4757	DS 4851 V 7901511	DS 4504 V 910862	DS 1700 V 4911931	DS 4630 V 4913165		
OUTLINE DRAWING		Air 7075029 Water 7075030	Air 7025905 Water 7025906	2-Hdlr 7006650 4-Hdlr 7006651	4055563	4055563			
MANUFACTURING PART NUMBER	In development	Specified on 7075001	7025951	2-Hdlr 7006600 4-Hdlr 7006700 Moonbm 7033725 TSS 7047425 VAST 7052820	1242 4063640 1243 4052000 1246 4054420	1245 4063500 1248 4063640	4055600	7007800	In devel

COMPARISON OF UNIVAC DEFENSE AND COMMERCIAL MAGNETIC TAPE EQUIPMENT

1 AUGUST 1968

	1242/43/46 (RD-243)	1245/48 (MARS)	1249	1560 (NAACOL) (RD-261)	UNISERVO 12	UNISERVO 16	UNISERVO VI C	UNISERVO VIII C	UNISERVO III C/IV C	UNISERVO III A	UNISERVO II A
	Progr. (1242/43)	No	No	No	Dual Chan. Feat.	Dual Chan. Feat.	Programmed	Programmed	No	Optional	No
6	30	30	30	30	9	9	18/30/36	18/30/36	18/30/36	30/36	30/36
	-15	-15	-15	-15	-3	-3	-3	-3	-3	-3	-3
5 KC	14.6 to 23.6 KC	22.5 KC	3.9 to 31.2 KC	13.5 to 50 KC	8.54 to 68.3 KC	24 to 192 KC	8.5 to 34.2 KC	24 to 96 KC	22.5 to 90 KC	100 KC	12.5 to 25 KC
3 KC	2.9 to 4.7 KC	4.5 KC	.79 to 6.2 KC	1.7 to 10 KC	6.4 to 68.3 KC	18 to 192 KC	1.4 to 11.4 KC	4 to 32 KC	3.75 to 30 KC	16.7 to 20 KC	2.1 to 5 KC
cab. control only)	2 per cab. 2 per control (1246 1 only)	2 per cab.	2 per cab. 2 per control	2 per cab. 2 per control	1 per cab. 16 per control	1 per cab. 16 per control	1 per cab. 16 per control	1 per cab. 16 per control	1 per cab. 12 per control	1 per cab. 16 per control	1 per cab. 12 per control
0	Designed to MIL-E-16400	Designed to MIL-E-16400	Designed to MIL-E-16400	Qualified to MIL-E-16400	Comm'l	Comm'l	Comm'l	Comm'l	Comm'l	Comm'l	Comm'l
	Base Isolot. 1243 (Solid Base 42/46)	Base Isolot. 1245 (Solid Base 1248)	None	Transport Frame	None	None	None	None	None	None	None
1/3 x 30D	Water Cooled: 72H x 37W x 36D	Water Cooled: 72H x 37W x 36D		72H x 36W x 36D	Tape Cabinet: 63.5H x 26W x 29D	Tape Cabinet: 63.5H x 29W x 29D	Tape Cabinet: 63.5H x 26W x 29D	Tape Cabinet: 63.5H x 29W x 29D	Tape Cabinet: 63.5H x 29W x 30D	Tape Cabinet: 63.5H x 31W x 30D	Tape Cabinet: 69H x 31W x 30D
1/3 x 30D	Air Cooled: 76H x 48W x 36D	Air Cooled: 76H x 48W x 36D			Control Cab. (5017) 63.5H x 24W x 24D	Control Cab. (5017) 63.5H x 24W x 24D	Control Cab. (5008) 63.5H x 24W x 24D	Control Cab. (5008) 63.5H x 24W x 24D	Control Cab: 96H x 20W x 34.5D	Control Cab. (8003) 96H x 20W x 34.5D	Control Cab: 96H x 20W x 34.5D (with top hat)
150 900	1400	1650		1500	Master 850 Slave 500	Tape 950	Master 700 Slave 375 Control 600	Tape 700 Control 600	Tape 750 Control 310 Power Sply 2200	Tape 750 Control 625 Power Sply 2800	Tape 750 Control 625
	Water 4.8 gpm (1243) Air (1242/46)	Water 4.8 gpm (1245) Air (1248)	Water	Water 4.0gpm	Air	Air	Air	Air	Air	Air	Air
1/2, 3ph	115V, 400 Hz, 3ph 1.4 KW	115V, 400 Hz, 3ph 1.4 KW	115V, 400 Hz, 3ph	115V, 400 Hz, 3ph 1.4 KW			Tape (Master only) 230V, 4.35a, 60 Hz	Tape: 230V, 7.8a, 60 Hz	Power Supply: 208V, 60 Hz, 3ph 43.7 KW	Power Supply: 208V, 60 Hz, 3ph 3.8 KVA	Tape: 245V, 5a, 60 Hz
1/2, 1ph	115V, 60 Hz, 1ph 2.0 KW	115V, 60 Hz, 1ph 2.0 KW		115V, 60 Hz, 1ph 2.0 KW			Control (5008): 115V, 25a, 60 Hz	Control (5008): 115V, 25a, 60 Hz	Control Cab: 208V, 60 Hz, 3ph .6 KW	Contr. Cab. (8003): 208V, 3ph 400 Hz 600W 60 Hz 200W	Control Cab: 120/208V, 60 Hz 120V, 20a, 60 Hz
Hdlr	208V, 60 Hz, 3ph .8 KW										
1/2, 3ph (RD)	(Air-cooled blowers)										
	20A	20A	20A	20A	9300	9300	Transistorized	Transistorized	Vac. Tubes/Trans.	Vac. Tubes	Vac. Tubes
	DS 4555	DS 4615/DS 1708	DS 4634	Navships							
	DS 4504 V 910862	DS 1700 V 4911931	DS 4630 V 4913165								
650 651	4055563	4055563									
600 700 33725 5 320	1242 4063640 1243 4052000 1246 4054420	1245 4063500 1248 4063640	4055600	7007800	In development	In development	Mstr. 5024295 Slv 5019799	3611282	U1111\3525198 418 490 4077047	U1111\3610131 418 490 4077047	U1111\3610308 418 490 4006792

UNIVAC MAGNETIC TAPE UNITS	1840 MMTS	1540 A (RD-294)	1541 *	1240 A (RD-270)	1242/43/46 (RD-243)	1245/48 (MARS) *	1249 *	1560 (NAACOL) (RD-261)	UNISERVO 12	UNISERVO 16	UNISERVO 18
TAPE DRIVE	Single Capstan Friction	Dual Capstan Pinch roll	Single Capstan Vacuum	Dual Capstan Pinch roll	Dual Capstan Pinch roll	Dual Capstan Pinch roll	Dual Capstan Pinch roll	Dual Capstan Pinch roll	Dual Capstan Pinch roll	Dual Capstan Vacuum	Dual Capstan Pinch roll
TAPE SPEED	75 IPS Normal 150 IPS Rewind	120 IPS Normal 240 IPS Rewind	150 IPS Normal 300 IPS Rewind	112.5 IPS Normal 225 IPS Rewind	112.5 IPS Normal 225 IPS Rewind	112.5 IPS Normal 225 IPS Rewind	30 IPS Normal 180 IPS Wind/ Rewind	30 IPS Normal 180 IPS Wind/ Rewind/Search	42.7 IPS Normal 160 IPS Rewind	120 IPS Normal 240 IPS Rewind	42.7 IPS Normal 160 IPS Rewind
NUMBER OF TRACKS	7 9 by option	7	7	7	7 + Spkt	7	15 + Spkt	15 + Spkt	9 or 7	9 or 7	7 or 9
RECORDING METHOD	NRZI	NRZI	NRZI	NRZI	RZ	NRZI	NRZI	NRZI	PM or NRZI	PM or NRZI	NRZI
BLOCK LENGTH	Var. by frame	Var. by word	Var. by word	Var. by word	Univac 120	Var. by word	Var. by word	Var. by word	Var. by frame	Var. by frame	Var.
INTER-BLOCK GAP	.75 .6 option	.75	.75	.75	1.2	.75	1.2	.75	.6 or .75	.6 or .75	.75 or
TRANSPORT TYPE	Univac/SLC MMTT	Potter MT-120	Potter SC1150 Ampex TM-12	Potter 906-II-1	Potter 906-II	Potter 906-II	Potter 906-II-2	Potter 906-II-2	Univac Type 0861	Univac Type 0862	Univac Type 0
TAPE BUFFER TYPE	Vacuum Loop Bin	Tension Arm/ Vac. Chamber	Vacuum Loop Bin	Tension Arm/ Vac. Chamber	Tension Arm/ Vac. Chamber	Tension Arm/ Vac. Chamber	Tension Arm/ Vac. Chamber	Tension Arm/ Vac. Chamber	Vacuum Loop Bin	Vacuum Loop Bin	Vacuum Loop Bin
REEL SIZE AND WIND	10½ A-Wind (Payout above)	10½ A-Wind (Payout above)	10½ A-Wind (Payout on right)	10½ A-Wind (Payout above)	10½ B-Wind (Payout below)	10½ A-Wind (Payout above)	10½ A-Wind (Payout below)	10½ A-Wind (Payout below)	10½ A-Wind (Payout above)	10½ A-Wind (Payout on right)	10½ A-Wind (Payout above)
HUB TYPE	Folding Wedge	IBM quick-lock	IBM quick-lock	IBM quick-lock	Sliding block	IBM quick-lock	NAB quick-lock	NAB quick-lock	IBM quick-lock	IBM quick-lock	IBM quick-lock
TAPE SENSORS	BOT, EOT	BOT, EOT, LOW	BOT, EOT, LOW	BOT, EOT, LOW	BOT, EOT, LOW	BOT, EOT, LOW	BOT, EOT, LOW, HI	BOT, EOT, LOW	BOT, EOT	BOT, EOT	BOT, EOT
START/STOP TIME	6.4 MS	3.0/1.5ms		3.0/1.5 MS	3.0/1.5 MS	3.0/1.5 MS	3.0/1.5 MS	3.0/1.5 MS			7/5 MS
HEAD ARRANGEMENT	Dual Gap .250" separation D-C Erase 1.3" separation	Dual Gap .200" separatr. D-C Erase .687" separatr.	Dual Gap .200" separatr. D-C Erase .687" separatr.	Dual Gap .300" separatr. D-C Erase .687" separatr.	Single Gap Interlaced 4 & 4 D-C Erase	Dual Gap .300" separatr. D-C Erase .687" separatr.	Dual Gap .500" separatr. D-C Erase .687" separatr.	Dual Gap .500" separatr. D-C Erase 2.9" separatr.	Dual Gap .150" sep. 9-ch. D-C Erase 2.0" separatr.	Dual Gap .150" sep. 9-ch. D-C Erase 2.0" separatr.	Dual Gap .250" sep. 9-ch. D-C Erase 3.6" separatr.
RECORDING DENSITIES	200/556/800	200/556/800	200/556/800	200/556	130/210	200	131-1040	451-1667	1600/800 (9-trk) 200/556/800 (7-trk)	1600/800 (9-trk) 200/556/800 (7-trk)	200/556/800
RECORDING FORMAT	Odd/Even Parity Biocidal Mod 3, 5 or 6 (Wired)	Odd/Even Parity Biocit/Red. Octal Mod 3/4/5/6 (Progr.)	Odd/Even Parity Biocit/Red. Octal Mod 3/4/5/6 (Progr.)	Odd/Even Parity Biocit/Red. Octal Mod 3/4/5/6 (Progr.)	Univac Odd Parity Biocidal Mod 5 NTDS: Red. Octal	Odd/Even Parity Biocit/Red. Octal Mod 3/4/5/6	Normal Redundant Special	Normal Redundant Special	Odd/Even Parity Data Conversion (7-track only)	Odd/Even Parity Data Conversion (7-track only)	Odd/Even Parity Data Conversion (7-track only)
READ FUNCTION	Fwd & Bkwd (Inverts frames for Bkwd)	Fwd & Bkwd (Inverts frames for Bkwd)	Fwd & Bkwd (Inverts frames for Bkwd)	Fwd	Fwd & Bkwd (Inverts frames for Bkwd)	Fwd	Fwd & Bkwd	Fwd & Bkwd (Inverts frames for Bkwd)	Fwd & Bkwd	Fwd & Bkwd	Fwd & Bkwd (Inverts frames for Bkwd)
WRITE FUNCTION	Fwd	Fwd	Fwd	Fwd	Fwd	Fwd	Fwd	Fwd	Fwd	Fwd	Fwd
SEARCH FUNCTION	Fwd & Bkwd (≡)	Fwd & Bkwd (≥, ≡)	Fwd & Bkwd (≥, ≡)	Fwd & Bkwd (≥, ≡)	No	No	No	Fwd & Bkwd (Block Count)	No	No	No
POST-WRITE READ	Parity Check	Parity Check	Parity Check	Parity Check	No	Parity Check	Parity Check	Parity Check	Parity Check	Parity Check	Parity Check
WRITE/FILE PROTECT	Write Enable Ring	Write Enable Ring & Switch	Write Enable Ring & Switch	Write Enable Ring & Switch	Write Enable Ring	Write Enable Ring	Write Enable Ring & Switch	Write Enable Ring & Switch	Write Enable Ring	Write Enable Ring	Write Enable Ring
READ BIAS CONTROL	No	Progr. - Norm/ Hi/Low	Progr. - Norm/ Hi/Low	No	No	No	Progr. - Norm/ Low	No	Progr. - Norm/ Low	Progr. - Norm/ Low	Progr. - Norm/ Low

	1240 A (RD-270)	1242/43/46 (RD-243)	1245/48 (MARS) *	1249 *	1560 (NAACOL) (RD-261)	UNISERVO 12	UNISERVO 16	UNISERVO VI C	UNISERVO VIII C	UNISERVO III C/IV C *	UNISERVO III A	UNISERVO II A *
	Dual Capstan Pinch roll	Dual Capstan Pinch roll	Dual Capstan Pinch roll	Dual Capstan Pinch roll	Dual Capstan Pinch roll	Dual Capstan Pinch roll	Dual Capstan Vacuum	Dual Capstan Pinch roll	Dual Capstan Vacuum	Single Capstan Vacuum	Single Capstan Vacuum	Single Capstan
	112.5 IPS Normal 225 IPS Rewind	112.5 IPS Normal 225 IPS Rewind	112.5 IPS Normal 225 IPS Rewind	30 IPS Normal 180 IPS Wind/ Rewind	30 IPS Normal 180 IPS Wind/ Rewind/Search	42.7 IPS Normal 160 IPS Rewind	120 IPS Normal 240 IPS Rewind	42.7 IPS Normal 160 IPS Rewind	120 IPS Normal 240 IPS Rewind	112.5 IPS Normal 360 IPS Rewind	100 IPS Normal 360 IPS Rewind	100 IPS Normal 100 IPS Rewind
	7	7 + Spkt	7	15 + Spkt	15 + Spkt	9 or 7	9 or 7	7 or 9	7 or 9	7	9	7 + Spkt
	NRZI	RZ	NRZI	NRZI	NRZI	PM or NRZI	PM or NRZI	NRZI	NRZI	NRZI	PM	RB
	Var. by word	Univac 120	Var. by word	Var. by word	Var. by word	Var. by frame	Var. by frame	Var.	Var.	Var.	Var.	Var. or fixed
	.75	1.2	.75	1.2	.75	.6 or .75	.6 or .75	.75 or .6	.75 or .6	.75	.6	1.2
	Potter 906-II-1	Potter 906-II	Potter 906-II	Potter 906-II-2	Potter 906-II-2	Univac Type 0861	Univac Type 0862	Univac Type 0858	Univac Type 0859	Univac Type 0851	Univac Type 0850	Univac Type 0854
	Tension Arm/ Vac. Chamber	Tension Arm/ Vac. Chamber	Tension Arm/ Vac. Chamber	Tension Arm/ Vac. Chamber	Tension Arm/ Vac. Chamber	Vacuum Loop Bin	Vacuum Loop Bin	Vacuum Loop Bin	Vacuum Loop Bin	Vacuum Loop Bin	Vacuum Loop Bin	Vacuum Loop Bin
	10½ A-Wind (Payout above)	10½ B-Wind (Payout below)	10½ A-Wind (Payout above)	10½ A-Wind (Payout below)	10½ A-Wind (Payout below)	10½ A-Wind (Payout above)	10½ A-Wind (Payout on right)	10½ A-Wind (Payout above)	10½ A-Wind (Payout on right)	10½ A-Wind (Payout on right)	10½ B-Wind (Payout on left)	10½ B-Wind (Payout on left)
	IBM quick-lock	Sliding block	IBM quick-lock	NAB quick-lock	NAB quick-lock	IBM quick-lock	IBM quick-lock	IBM quick-lock	IBM quick-lock	Univac	Univac	Univac
	BOT, EOT, LOW	BOT, EOT, LOW	BOT, EOT, LOW	BOT, EOT, LOW, HI	BOT, EOT, LOW	BOT, EOT	BOT, EOT	BOT, EOT	BOT, EOT	BOT, EOT	BOT, EOT (Windows)	BOT, EOT (bumpers or windows)
	3.0/1.5 MS	3.0/1.5 MS	3.0/1.5 MS	3.0/1.5 MS	3.0/1.5 MS			7/5 MS	2.5 MS	3 MS	3 MS	5 MS
	Dual Gap .300" separatn. D-C Erase .687" separatn.	Single Gap Interlaced 4 & 4 D-C Erase	Dual Gap .300" separatn. D-C Erase .687" separatn.	Dual Gap .500" separatn. D-C Erase .687" separatn.	Dual Gap D-C Erase	Dual Gap .150" sep. 9-ch. D-C Erase 2.9" separatn.	Dual Gap .150" sep. 9-ch. D-C Erase 2.0" separatn.	Dual Gap .250" sep. 7-ch D-C Erase 3.6" separatn.	Dual Gap .250" sep. 7-ch D-C Erase 2.0" separatn.	Dual Gap .250" separatn. D-C Erase	Dual Gap .250" separatn. A-C Erase	Single Gap Interlaced 4 & 4 D-C Erase
	200/556	130/210	200	131-1040	451-1667	1600/800 (9-trk) 200/556/800 (7-trk)	1600/800 (9-trk) 200/556/800 (7-trk)	200/556/800	200/556/800	200/556 800 (IV C)	1000	125/250
	Odd/Even Parity Bioct/Red. Octal Mod 3/4/5/6 (Progr.)	Univac Odd Parity Bioctal Mod 5 NTDS: Red. Octal	Odd/Even Parity Bioct/Red. Octal Mod 3/4/5/6	Normal Redundant Special	Normal Redundant Special	Odd/Even Parity Data Conversion (7-track only)	Odd/Even Parity Data Conversion (7-track only)	Odd/Even Parity	Odd/Even Parity	BCD-Even Par. Binary-Odd Par.	Binary Even Parity	Binary Univac - Odd Parity
	Fwd	Fwd & Bkwd (Inverts frames for Bkwd)	Fwd	Fwd & Bkwd	Fwd & Bkwd (Inverts frames for Bkwd)	Fwd & Bkwd	Fwd & Bkwd	Fwd & Bkwd (Inverts frames for Bkwd)	Fwd & Bkwd (Inverts frames for Bkwd)	Fwd	Fwd & Bkwd	Fwd & Bkwd
	Fwd	Fwd	Fwd	Fwd	Fwd	Fwd	Fwd	Fwd	Fwd	Fwd	Fwd	Fwd
	Fwd & Bkwd (≥, ≡)	No	No	No	Fwd & Bkwd (Block Count)	No	No	No	No	Fwd	Fwd & Bkwd (Norm. or Masked)	Fwd & Bkwd
	Parity Check	No	Parity Check	Parity Check	Parity Check	Parity Check	Parity Check	Parity Check	Parity Check	Parity Check	Parity Check	No
	Write Enable Ring & Switch	Write Enable Ring	Write Enable Ring	Write Enable Ring & Switch	Write Enable Ring & Switch	Write Enable Ring	Write Enable Ring	Write Enable Ring	Write Enable Ring	Write Enable Ring	Write Enable Ring	Inhibit Write Ring
	No	No	No	Progr. - Norm/ Low	No	Progr. - Norm/ Low	Progr. - Norm/ Low	Progr. - Norm/ Low	Progr. - Norm/ Low	Auto. - Hi/Low	No	Progr. - Norm/ Hi/Low