

TWINCITIES NEWS

August 1986



Curving mirrored-glass windows reflect the oak trees at the new Eagandale Center building. See page 1 for articles about two new Sperry facilities.

TWINCITIES NEWS

August 1986

New building to house commercial operations

Looking from Pilot Knob Road, it's hard to see what's going on beyond all the mounds of excavated earth on the Sperry Park campus in Eagan. But that's part of the plan.

A new, three-story, 295,000 square foot office building will occupy the hilltop site, but even after completion in the fall of 1987, much of the building won't be in view from the road.

For a number of weeks in June and July, bulldozers, graders and other earthmoving equipment rearranged many acres of land at the northeast corner of the 203-acre Sperry Park campus. Access roads were sculpted into the area, earth berms were created to shield parking lots from public view, and a building site was carved into the hillside, carefully wedged

between groves of oak trees.

According to Jack Grundtner, project manager, Facilities Management, Information Systems Products and Technology, (ISP&T) the extensive site preparation and the building architecture were designed to present a high-tech image in a low-key way.

"The building has been very sensitively designed into this site," Grundtner said. "It will be well-screened from the neighborhood. We didn't have to take out a single oak tree—some of the parking was even changed to save some trees."

About 1,000 employees will occupy the new Sperry facility. Grundtner explained that the new building does not represent an expansion of Sperry operations. Instead, it is designed to accom-

modate a consolidation of various commercial computer operations that currently are scattered in leased office space and other Sperry buildings in the Twin Cities. Many of the future occupants are directly involved with Sperry customers and visitors, and that consideration was an important factor incorporated into the design of the building.

Grundtner said the exterior of the building will be faced with a tan-colored pre-cast material and blue-tinted glass. The upper two stories will sit on level ground while the lowest floor is set into the hillside. The center floor will serve as the main floor with two entrances. The lower floor of the building will feature a skylit atrium, a cafeteria (with an outside dining terrace), an employee fitness center with showers and locker rooms, the main loading dock and office space.

Most of the middle floor will be taken up with a 50,000 square foot computer center. As part of the energy saving design

of the building, waste heat generated by the computer center will be recycled throughout the building. A marketing visitors' center and office space will fill out the rest of the middle floor.

The upper floor is planned to be essentially all office space. Grundtner said most of the office space in the building is "open design space" which allows the flexibility to respond to changing organizational needs. The occupants of the new building will include most of the commercial organizations that are now located in Bloomington and Eagan.

According to Dick Newman, director, Facilities Management and Services, ISP&T, the building was planned to accomplish several objectives.

"Over the past few years, Sperry in the Twin Cities has grown. As a result, there are a lot of scattered short-term leases. This new building is an effort to achieve operating economies

Continued on page 6

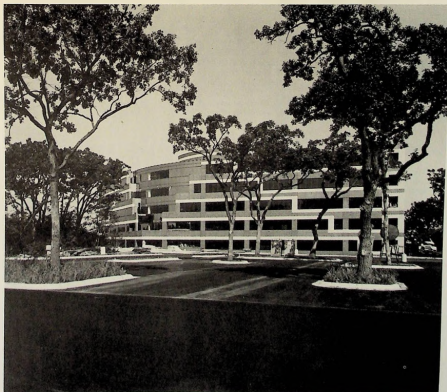
Eagandale Center opens next month

by Barbara Fischer

Five hundred and seventy Computer Systems Division (CSD) employees will soon be pecking up their offices in preparation for the move to the new Sperry Eagandale Center office building, located at the intersection of Interstate 494 and Pilot Knob Road in Eagan. The five-story, 156,000 square foot facility will provide efficient consolidated office space for CSD employees now located in various leased and Sperry-owned facilities in the Eagan area.

According to Facilities Resources, occupancy is expected to occur in September. Eagandale I and Yankee Square 0 will be vacated at that time. Employees from the Resources Management, Quality, Strategic Planning and Advanced Technology, Controller and Marketing organizations will be located at the new facility. In addition, Bill Geiger, CSD vice president and general manager, and his staff will be located at the building.

Continued on page 3



The Computer Systems Division's Eagandale Center building features reflective glass and a two-color brick and stone exterior.

United Way campaign is Sept. 22-26

The annual United Way campaign begins next month and the 1986 goals will provide a significant challenge for all Sperry employees. The United Way of the St. Paul Area set its goal at \$15.6 million, an increase of 5 percent over the \$14.8 million raised last year.

Sperry plays an important role in achieving that goal during its own campaign, Sept. 22 - 26. Sperry in the Twin Cities has set a total goal of \$661,700, representing a 4 percent increase over last year's goal of \$635,000.

This year's theme is "Let Your Head Lead Your Heart," which signifies a more serious approach to advertising in an effort to persuade more people they should contribute to the United Way. At Sperry, parallel campaigns will be conducted at Roseville-based Information Systems Products and Technology (ISP&T) facilities (Sperry North) and at Eagan-based Defense Products Group facilities (Sperry South). A Metro campaign including Bloomington employees will be administered through Sperry North.

Sperry North

Wynn Roberts, director of Manufacturing Program Management, ISP&T, is the United Way campaign chairman for Sperry North. He will be assisted by his co-chairman, Jim Stahley, vice president of Systems Development, ISP&T, and the campaign coordinator, Deb McGlone, personnel specialist.

Sperry North has set a campaign goal of \$261,700, reflecting a 10 percent increase in the per capita gift. Last year, Sperry North exceeded its goal of \$253,000 by 11 percent.

"For those who receive help through the United Way, the need is very real and deserving," said Roberts. "If you have not experienced the satisfaction of making a contribution, I ask that you re-evaluate this cause. And

to those of you who have pledged consistently over the years, I would ask that you consider increasing your gift this year since the relentless cost of living continues to escalate," he added. "Let's go for it once again and show them that people at Sperry care."

Sperry North's loaned executives this year are Bob Tucker, a Roseville retiree and Julie Johnson, who has been working as a personnel liaison for the Mercury staff at Earle Brown Tower. Loaned executives are Sperry employees or retirees who work for the United Way promoting campaigns at other companies during the next three months.

Metro

Included in the Sperry North campaign are employees who work in Bloomington at Metro 1, Metro 2 and the Sperry Learning Center. Pat Casey, vice president, Systems Integration Division, Information Systems, is the chairman of Metro's campaign and his co-chairman is Ralph Dombross, executive administrator, Systems Integration Division.

Sperry South

Don Marth, director of Program Management, Standard Products, CSD, is the United Way campaign chairman for Sperry South. He will be assisted by his co-chairman, Tom Knops, director of Standard Products Marketing, CSD, and his campaign coordinator, Teri Chapman, Employee Programs representative.

Sperry South has set their goal at \$400,000, approximately a 5 percent increase over last year's goal of \$382,000. Sperry South exceeded their 1985 goal by 2 percent, contributing \$390,246 last year.

"Our 1986 goal is significant in a year when business pressures dominate much of our

activities," said Marth. "Yet, Sperry in Minnesota is gifted with the kind of people who always react to what's required when it's required. If every Sperry South employee would increase their United Way gift by only a quarter a week, we will exceed our goal this year," he added.

The loaned executives from Sperry South are Ed Kulczycki, a Sperry retiree and president of the V.I.P. Club and Sandy Geib, a lead PC assembler in the PC Sub Assembly department, Shepard Road, John Robertson, manager of Strategic Planning, Standard Products, CSD, is acting as a volunteer executive soliciting corporate contributions in the high-technology area.

Corporate contribution

In addition to supporting the employee campaigns and the loaned executive program, Sperry also makes a corporate contribution each year. In 1986, the company will contribute

\$129,500 to the United Way of the St. Paul Area, an 8 percent increase over last year's gift, and \$5,500 to the Minneapolis United Way, a 10 percent increase.

Employee contributions to the United Way make a broad range of services available for neighbors, co-workers or family members who need them. Community problems receiving special attention from the agency this year are:

- Chronic hunger in families with dependent children.
- The critical need for legal assistance for low-income people.
- High unemployment among people between the ages of 16 and 25.
- The difficulty young mothers have in trying to free themselves from dependence on public assistance.

Watch for more information on the upcoming campaign in issues of Spectrum and Twin Cities News.

CSD service award celebration includes guests

"Looking Back, Moving Forward" is the theme of this year's Service Award Banquet. Invitations have been sent to all Computer Systems Division (CSD) and Air Traffic Control (ATC) employees celebrating length of service anniversaries in fiscal year 1987. A celebration has been planned for Sept. 27 at the St. Paul Civic Center in downtown St. Paul. The evening begins at 5 p.m. with a reception, followed by a sit-down dinner, an awards program and entertainment by Bobby Vinton.

Employees will be grouped according to years of service with those celebrating longer lengths of service having choice seating. To insure yourself of a good seat, please return the banquet RSVP promptly. Your RSVP is also used to request additional balcony tickets (maximum of six) for family and friends to view the

awards program and entertainment. RSVPs must be returned to CSD Employee Programs no later than Sept. 1.

Beginning Sept. 1, phone orders will be accepted for any balcony seats remaining. Employees may request up to four free tickets for the Bobby Vinton performance by calling 456-3650 at Sperry Park. These general admission tickets will allow any CSD employee and family or friends to become a part of the service award celebration and enjoy an evening of entertainment. Seating will start at 7 p.m. with the awards program at 7:30 p.m. and the Vinton performance at 8:30 p.m.

This is the first year that a special evening has been planned for all CSD and ATC employees celebrating a service award. For further information, call Employee Programs at 456-2807.

Rain doesn't stop Zero Defects Day

The Eagan Zero Defects Day held last month was marred by only one imperfection—the weather. A full-blown thunderstorm, however, didn't deter some 2,700 Computer Systems Division (CSD) employees from attending the event held under large canopies in the northwest parking lot at Sperry Park. Addressing the crowd were General John W. Vessey, Jr., former Joint Chiefs of Staff chairman for the Department of Defense; Bill Geiger, vice president and general manager, CSD; Dave Kolling, director of Systems Engineering Operations, CSD; and Dick Roessler, director of CSD Quality. Zero Defects Day is part of Sperry's ongoing Quality Improvement Process aimed at product and service quality and productivity improvement. Employees were encouraged to celebrate their accomplishments in this area and reaffirm their total commitment to perform defect-free work. Organizers of Zero Defects Day were pleased with the turn-out and called it a "memorable event."



Sperry reports first quarter results

Sperry Corporation reported net income for the first quarter ended June 30, 1986, before an estimated one-time charge in connection with the pending merger with Burroughs, of \$44.4 million or 75 cents per share, compared with continuing operations results of \$54.1 million or 95 cents per share a year ago.

Including the estimated merger charge for fees and cancellation of employee stock option programs, Sperry reported net income of \$6.8 million or 12 cents per share for the quarter.

Revenue was \$1,255 million, up 2 percent from \$1,233

Consolidated Summary of Income (in millions of dollars)

Three months ended June 30

	1986	1985	Change
Revenue	\$1,255.4	\$1,233.4	+ 1.8%
Income from continuing operations	6.8	54.1	- 87.4%
Net Income (loss)	6.8	51.5	- 86.8%

million a year ago.

Defense and aerospace operations experienced a revenue gain of 22 percent and an operating profit increase of 48 percent over a year ago. Commercial computer operations, as expected, were adversely affected by the continuing weakness in the computer industry. Revenue de-

creased 12 percent and operating profit declined 44 percent from a very strong quarter a year earlier.

Orders in the first quarter for the defense and aerospace segment declined 6 percent while backlog rose 5 percent from a year ago. Commercial computer operations orders were down 19 percent and backlog declined 16

percent from the level of one year earlier.

Burroughs acquired control of Sperry June 11, 1986, with the completion of a cash tender offer for 31 million shares. Burroughs expects to acquire Sperry's remaining shares in exchange for Burroughs securities during the quarter ending Sept. 30, 1986.



Finishing work, such as the installation of carpeting, is occurring at a rapid pace as workers hurry to ready the Egandale Center building for its scheduled September occupancy.

Egandale Center

Continued from page 1

The Sperry Park facility will be dedicated to engineering and research functions.

The new building has several unique features. It will have systems-style furniture, giving each employee a private area to work in. Don Haskamp, project manager, Facilities Resources, said that there are cost savings for Sperry built into the facility. "Every work station will be wired for a terminal prior to move-in," said Haskamp. "This eliminates the need for costly re-wiring when new equipment is installed."

Another feature is the window aisles which circle the perimeter of the building. These perimeter aisles enable a continuous traffic flow throughout the building and

also provide an enjoyable view for all employees. "Leaving an aisle also will solve the problem of temperature variance experienced by those who sit right by the windows," said Haskamp. Generally, the first three or four feet near the windows register larger temperature differences.

The new building also features an auditorium, full cafeteria service, a nursing station and space for an exercise facility. Each floor will have three conference rooms in addition to those located off the lobby.

Groundbreaking for Sperry Egandale Center was held Sept. 24, 1985. The build-to-suit office will be leased by Sperry. Northwestern Mutual Life will own the new building. Opus Corporation is the contractor.

TO YOUR HEALTH



by Bev Krosgeng

Are you the kind of person who can't seem to find the time or the inclination to take a vacation? If so, how can you tell if you need a break? Here is a brief checklist of clues suggested by two psychologists to determine if you may be needing time off. If you do take vacations and get away from the job, the clues may indicate a need for stress management for other reasons.

Irritability — It's the hallmark of a need for a break.

Mistakes — You're making more than your share.

Tiredness — Especially at inappropriate times, like when you get up in the morning.

Obsessiveness — All you think about is work. You take it home, and the rest of your life suffers for it (social, exercise, family, etc.).

Fantasying — "I keep wishing I was somewhere else, walking down a strange new street." However, psychologists also warn that if spring is in the air and everything is budding, and you don't wish you were "fishing," you may be out of touch with the part of yourself that recognizes when you need a break.

Persons most prone to missing these cues are people who view work like a leisure activity (something done for its own sake, not for the results, or because someone is forcing you to do it), according to psychologist Stephen Shapiro, Ph.D. and the author of "Time Off, A Psychological Guide to Vacations." Even so, he states, while not everyone needs a long vacation, everyone needs a break.

"Nobody can be continually creative—no matter how much you love your job—without breaks." A long weekend or afternoon of golf may be enough to gain the kind of perspective needed to return to the job refreshed.

Planning longer vacations or certain types of vacations may also be stressful for people who hate to leave the office. A booklet written by Dr. Shapiro may be helpful for these people and also offers general help to all potential vacationers. Called "Vacations: Making the Most of a Good Thing," the booklet is available free from National Car Rental, Public Relations Department, 7700 France Ave. So., Minneapolis, MN 55435.

Summer is nearing an end but there is still time to enjoy leisure time off-the-job activities or make future vacation plans. If you haven't taken a vacation but really can't get away, psychologists say be sure to use your weekend for what it's intended—to escape, relax and do something totally unrelated to your job and daily existence.

Bev Krosgeng is the Occupational Health Services manager for Information Systems Products and Technology. She is a registered nurse and holds a Master's of Science degree in public health.

Employee picnics provide fun for everyone

Employee picnics highlighted the month of July as hundreds of Sperry families got together with co-workers to enjoy a day or two in the summer sun.

The Computer Systems Division (CSD) picnic was held July 26 and 27 at the Cedar Lake Farms near New Prague. A wide range of activities along with a delicious chicken dinner made for a weekend of family fun. In addition to the egg toss, gunny sack races and a variety of exciting water activities, families this year participated in a couple of new events—a medallion treasure hunt and a sticker stop game.

"It was really enjoyable to watch families participating in all of these activities together," said Teri Chapman, CSD Employee Programs representative and coordinator of the event. "The picnic provided the enjoyment that comes from being with your family."

While CSD employees were

hunting for medallions, playing volleyball and running obstacle races, employees from Information Systems were riding roller coasters and tilt-a-whirls at Valleyfair. Employees from facilities in Roseville, Brooklyn Center and Bloomington attended their annual picnic on July 27.

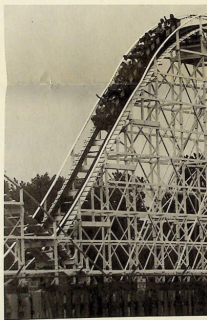
The weather looked questionable at first, but fortunately, things cleared up and employees could make use of the Sperry reflective sun visors which all received.

"The picnic is still such a popular event," said Deb McGlone, Roseville Employee Services representative and coordinator of the annual picnic.

"Everyone really seems to enjoy Valleyfair and all there is to do there," she added.

When employees weren't "doing the Flume" or watching the IMAX show, a hearty chicken dinner at the picnic grounds offered a relaxing time for all.





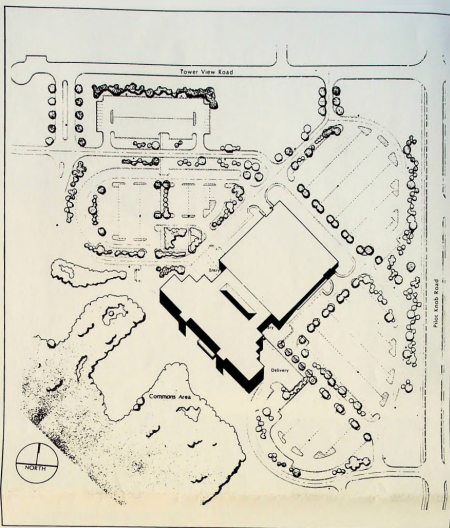
New building consolidates offices

Continued from page 1
through consolidation and by providing more functional arrangements for the occupying organizations," Newman said. "Coupled with that, it's an effort to provide a modern and efficient work environment for our employees while presenting a high-tech computer industry image to our customers."

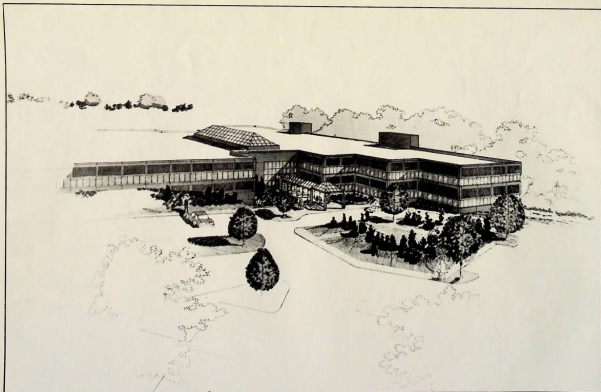
Preliminary site grading is completed on the project and construction has begun. The steel for the building is scheduled to arrive in September. The construction time is estimated at 15 months, with occupancy to occur in the fall of 1987.

The City of Eagan has offered Sperry \$700,000 in tax-increment financing assistance. That plan provides that half of the taxes generated by the new building over a specific period of time will be used to pay off the \$700,000 in bonds issued to help finance the project. Much of that \$700,000 in financing will be used for site and utility improvements. This includes plans to install a traffic signal at the intersection of Tower View Road and Pilot Knob Road.

The architecture and engineering firm for the new building is VVKKR of Alexandria, Va., a firm used by Sperry for previous projects on the East Coast. The general contractor for the project is Kraus-Anderson Construction Company, Minneapolis Division.



This top view of the plans for the new building show how it is situated on the corner of the Sperry Park site.



This architect's perspective shows the front entrance and northwest side of the new building.

SERVICE AWARDS



TWIN CITIES DPG

35 Years



Mary Peterson
Raymond Simpson

30 Years



John Duryee



Charles Fisher



Ernest Horning



Wayne Huisman
Irvin Johnson



Edward Kashube
Albert Magnuson



George Nagel



Robert Neff



Wilbur Nelson



John Radford



Albert Schwartz

25 Years
Donald Danneker
Raymond Mollet
Norman Viss

20 Years
Dennis Durand
Otis Eling
Jeanette Foley
Devola Gray
Rhoda Hardeman
Alfred Nultermeier
John O'Leary

Eugene Philipson
Robert Sandberg
Robert Siegfried
Richard Sivigny
Virginia Van Horn
Charles Vig
Anthony Williams

15 Years
Edward Bergauer
Katherine Dubbels
Gregory Gremore
Georgia Ingram
Clinton Jurgens

10 Years
David Carter
Norman Delin
Allan Domondski
Peter Dress
Kristin Hott
Annette Laskey
Kenneth Nelson
Douglas Phelps
Sherri Pinotti

5 Years
Camille Ashton
John Couchman
Mark Heidman
Michael Medina
Catherine Millham
Susan Mortensen
Michael Norellus
Edward Nowak
Katherine Splett
Vincent Splett

TWIN CITIES INFORMATION SYSTEMS

30 Years
Phyllis Bloomberg
Curtis Boege
Ruby Damrau



Jack Green
Gerald Krause
George Sellner
William Swenson



Adolph Zinda

25 Years
Ronald Barton
Shirley Beutz
William Crowther
Eugene Gullani

20 Years
Merton Becklund
Arvin Gehring
Charles Hanson
Julianne Hanson
James Hoffus
Donald Klippenstein
Evelyn LaChapelle
Robert Lamp
Robert McDonough
Margaret Schwartz
James Swerich
Lyle Skandell
Pearl Skeate
Norbert Stachowski

15 Years
Michael Brock
Thomas Kehrwald
Greger Leijonhufvud
Sara Neslund
Kirk Suen
A. D. Tillery

10 Years
Dale Baker
Jaime Beltrich
Carl Corbett
Albert DeNigris
Louis Doer
John Fountain-Johnston
Angela Fraundonist
Gerald Genierka
Craig Hanson
Michael Jende
Joy Jenkins
Mark Johnson
Glenn Kaiser
Telle Kridle
Ronald Margie
Michael Marlin
Robert Otley
Richard Okeneck
Carl Revert
Robert Vialero
Thomas Watson

5 Years
David Bradley
Shawn Carpenter
Mary Jane Claunch
George Emery
William George
Michael Gold
Harold Harder
Charles Johnson
William Joseph
Leon Kosek
Barbara Lindgren
Michelle Nelson
Reid Oines
Anita Park
Hseng Park
Robert Pieg
Philip Perrot
James Seefeldt
Lawrence Smith
Mary Anne Smith
Kay Solitto
James Stammers
Thomas Strieter
David Thrush

TWIN CITIES SMG

30 Years
Darrel Radie

25 Years
Ernest Ranning

15 Years
Robert Rausch

10 Years
Howard Peterson
Michael Smith

CLEAR LAKE

30 Years



Richard Wygle

5 Years
Melinda Gasaway
Tray Grant
Janice Hall
Dolores Huntley
Diane Jamgaard
Holly Keller
Chris Lundt
Craig Mshaki
Carole Penning
Douglas Price
Beatrice Wallace

JACKSON

15 Years
Lorraine Adkins

10 Years
Twyla Hogue
Doris Holtz
Denise Malcolm

RETIREES

Walter Ashling
Doris Bebeau
Arthur Blaisdell
Leo Bock
Peter Freeman
Harold Gibbons
Aaron Gottschalk
Paul Hasker
Charles Harkness
Paul Koschick
Sterling Lawson
George Lawson
Dana LeBaron
Marilee McDermott
Lawrence Percival
John Stannertz

RECREATION NOTES



CSD EMPLOYEE PROGRAMS

It's summertime and the givin' is easy. The Red Cross Bloodmobile visits CSD locations according to the following schedule:

Midway	Aug. 19	10 a.m. - 2 p.m.
Corporate Square	Aug. 20	9:30 a.m. - 2:30 p.m.
Sperry Park Auditorium	Aug. 21 - 22	8:30 a.m. - 2:30 p.m.
Shepard Road Mobile Unit	Aug. 21	9:30 a.m. - 2:30 p.m.
	Aug. 22	Noon - 6 p.m.

CSD AND ROSEVILLE REC NOTES

SBA bowling leagues are being formed. The names of league secretaries are available through CSD Employee Programs and on facility bulletin boards. Play begins the week of Sept. 8.

Volleyball teams are being formed for play beginning the week of Oct. 6. Coordinate a team and join your friends at the St. Paul Armory for Tuesday or Thursday leagues. Check bulletin boards for details.

Renaissance Festival tickets are available at all CSD and Roseville ticket locations. Adult tickets are \$8.25; children, \$3.50; and food coupon books, \$5.50.

State Fair admission tickets are available at all CSD and Roseville ticket locations. The State Fair runs from Aug. 21 through Sept. 1.



TWIN CITIES NEWS

Member, International Association
of Business Communicators

Published monthly for all Sperry
employees in the Twin Cities, Jackson,
Minn. and Clear Lake, Iowa by the
Regional Communications Depart-
ment, P.O. Box 64525, St. Paul, MN
55164-0525, Mail Station U2F22.

Staff

Bruce Behounek, 456-3518
Mary Wetschka, 456-3767

Correspondent

Judy Cognition, 635-6563

UNISCOPE, MAPPER, SPERRYLINK,
SPERRY, and ♣ are trademarks
of Sperry Corporation.



This paper is recyclable.

COMMUNITY INVOLVEMENT



Phone Counselor — Provide information, referral and short-term counseling to callers in need of assistance. There are three main phone banks: one for adults dealing with depression, relationship concerns or loneliness; one for children in crisis; and one for information and referral only. Evening hours. Training program begins Sept. 13.

Crime Prevention Screener — Call references of applicants seeking certification as McGruff Safe House (a Minneapolis neighborhood home where children can go in case of an emergency). Evenings — in your own home. Training provided.

Kinship Volunteer — Give a child in the St. Paul area a meaningful friendship with a supportive adult. The Kinship program helps build self-esteem by providing an adult role model and friend who cares. Men, women, couples or families are needed to befriend children ages 5-15. Activities can be as simple as a walk to a playground or as involved as a camping or fishing trip. The important thing is sharing quality time and giving the child the needed attention and encouragement.

Meals-On-Wheels Driver — Help senior citizens in the homes they've lived in all of their lives. Spend your lunch hour once a month delivering hot, nutritious meals to appreciative senior citizens who cannot prepare their own meals.

FOR MORE INFORMATION, CONTACT THE REGIONAL
COMMUNITY RELATIONS DEPARTMENT AT 456-4803
(SPERRY PARK) OR ROSEVILLE COMMUNICATION AT
635-7775.

Sperry Park, P.O. Box 64525
St. Paul, MN 55164-0525

BULK RATE
U.S. POSTAGE
PAID
ST. PAUL, MN
PERMIT NO. 1145