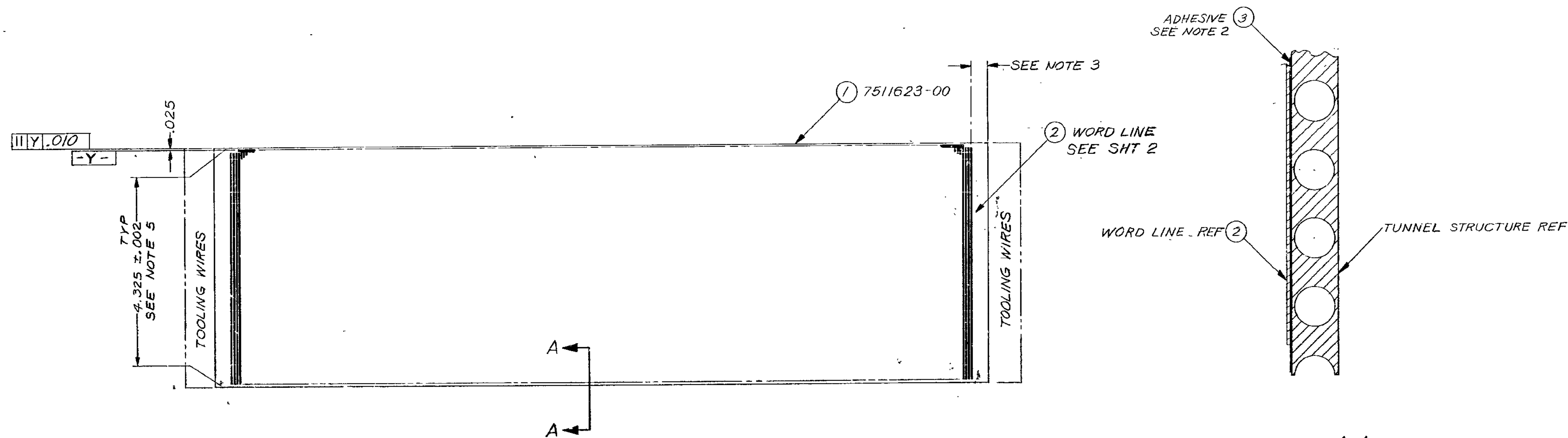


1. IDENTIFY PER ITEM 501.
2. BOND TOGETHER USING ITEM 3, MAX ADHESIVE THICKNESS TO BE .0005.
3. LOCATE EDGE OF ITEM 2 WITHIN CRITICAL AREA IDENTIFIED ON DRAWING 7511623.
4. WORKMANSHIP PER UNIVAC MANUFACTURING WORKMANSHIP STANDARDS MANUAL.
5. DIMENSION 4.325 BETWEEN CENTER LINES OF OUTSIDE TOOLING WIRES MUST BE MAINTAINED AFTER FABRICATION.

REVISIONS						
ZONE	LTR	EIR	DESCRIPTION - FOR DETAILS SEE EIR	CHK	DATE	APPROVED
	A	269A1-76	LY WAS A		1/20/71	DR 4/4



SECTION A-A
SCALE 100/1

DRAWING UNDER
EIR CONTROL

RELEASED

N.A. 7511615

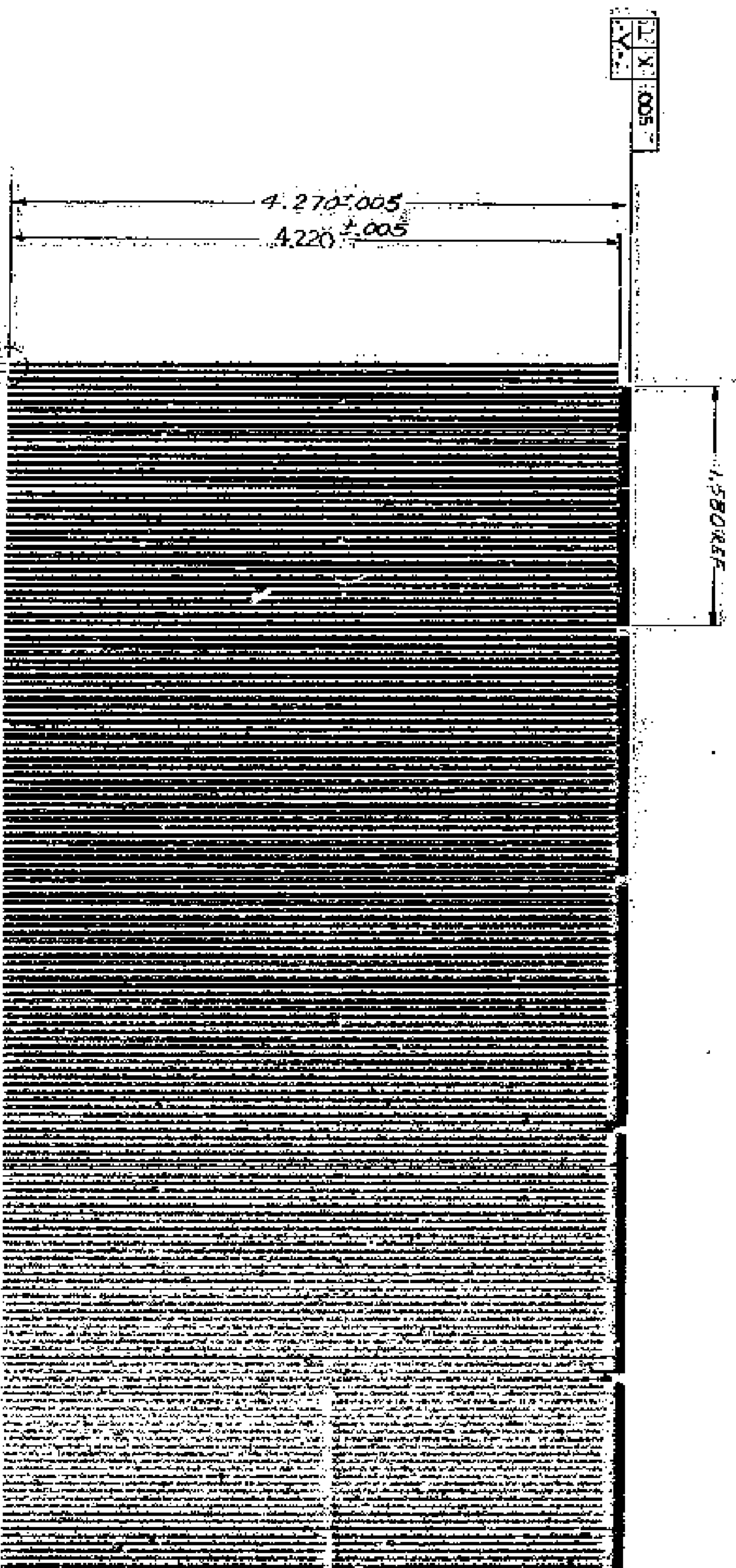
PART NO. 7511767-00

FOR MATL REQUIREMENTS SEE L/M,
L/M REV LETTER CONTROLS DOCUMENT.

UNLESS OTHERWISE SPECIFIED		LAYOUT	DATE	CLASS	UNIVAC FEDERAL SYSTEMS DIVISION	
DIMENSIONS IN INCHES TOL. OR		J. ILLI	1/2/71	D	DIVISION OF SPEC. BANG CORPORATION (PHIL. 408 - 722, 800, 801 - 21, 408, 808, 809)	
2 PLACE	3 PLACE	DRAFTSMAN			TITLE	
DECIMALS	DECIMALS	D. NELSON			TUNNEL STRUCTURE - WORD LINE	
+	±	CHECKER			ASSY	
HOLE DIA. TOL.		DESIGNER			SIZE	CODE IDENT.
0	11.20	1.20 THRU .501 AND			D	7511767
	.250	.500 LARGER			NO.	
	+ .008	+ .008 + .010			SCALE	1/1
	- .008	- .008 - .010			WEIGHT	
T. HEADS EXT. CL. INT. CL. B.		APPROVER			SHEET / OF 2	
COMMODITY CODE					2/1	

DO NOT SCALE THIS DRAWING

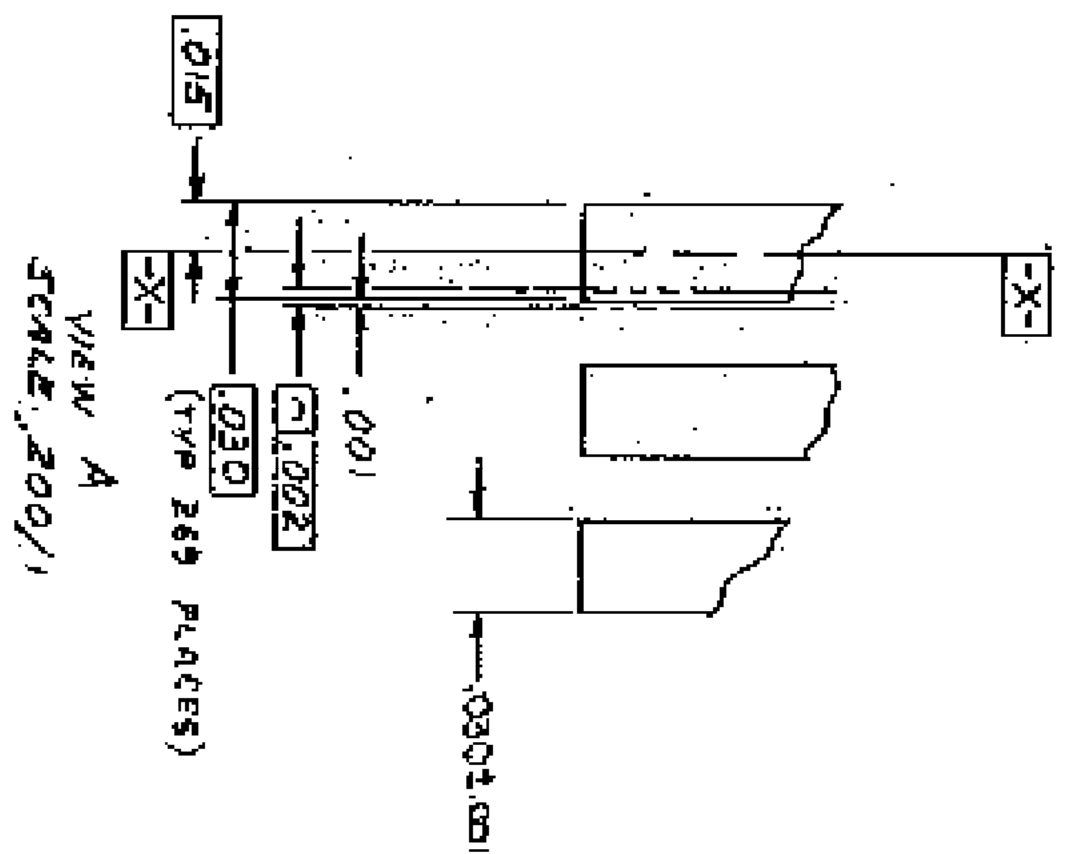
UNIVAC (Rev. 6/69)



SEE VIEW A

Ø2.0 (269 PLACES)
Ø1.8 (269 TOTAL)

R.400 REF

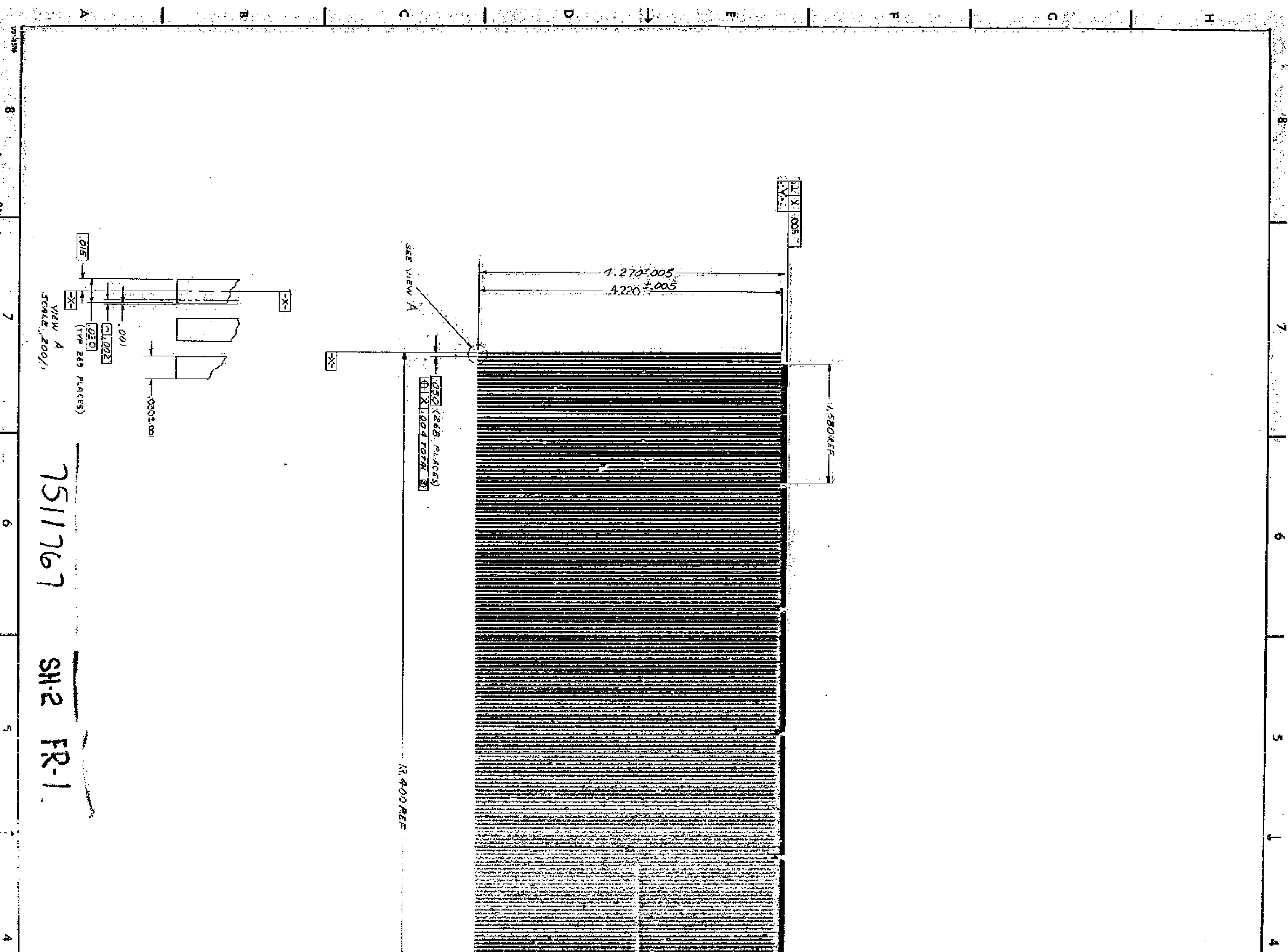


VIEW A
SCALE: 200/1

(TYP 269 PLACES)

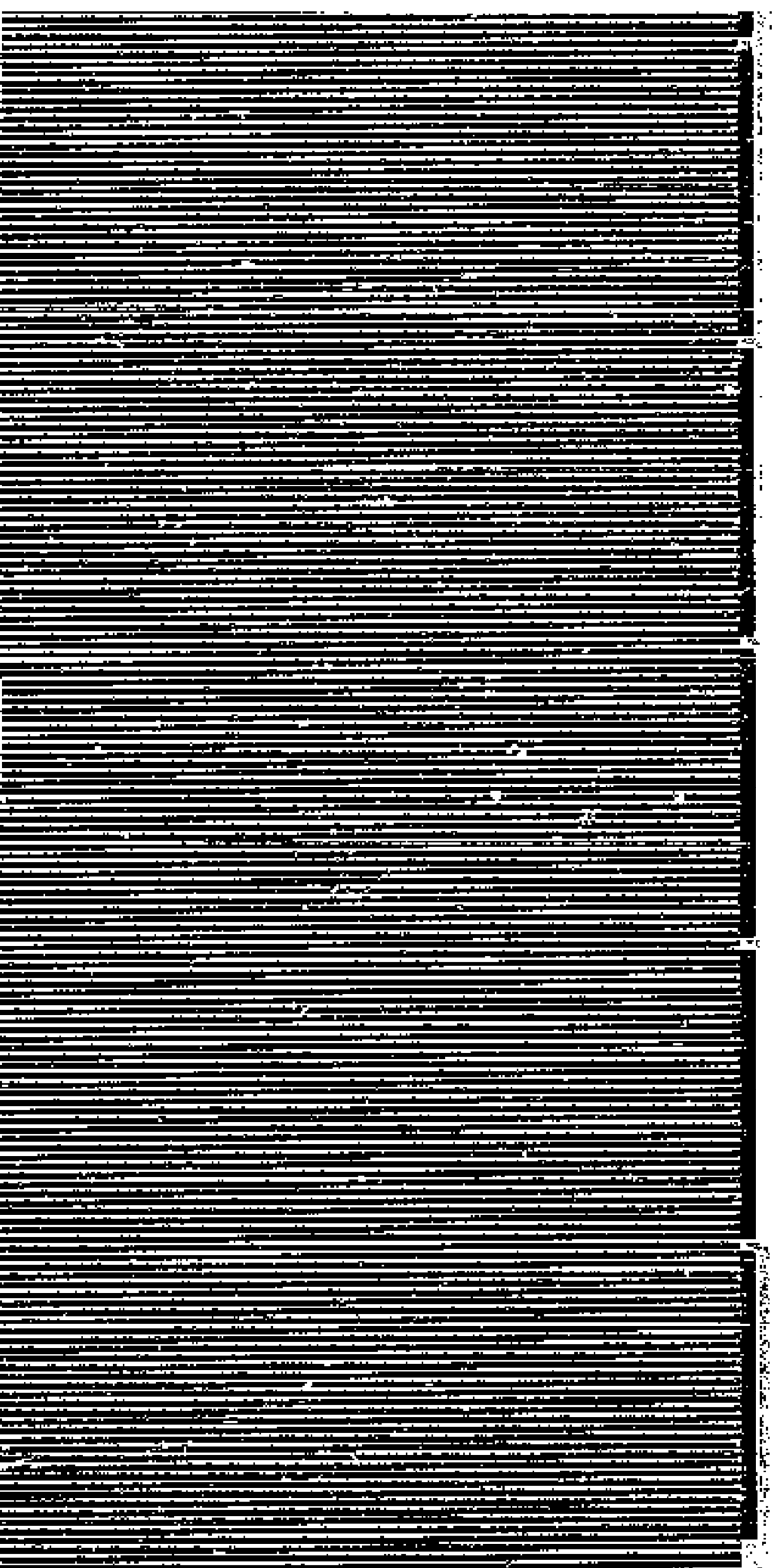
7511767

SN-2 FR-1



5 4 3 2 1

CONTRACT NO.	SECTION	DATE	APPROVED
7511767	UNIVAC	1974	
ADDRESSEE	ADDRESS	CITY	STATE
UNIVAC	1000	WASHINGTON	DC



13400 REF

UNIVAC
2 REF

7511767 SH-2

FR-2

UNIVAC FEDERAL SYSTEMS DIVISION
1000 1000 WASHINGTON DC 20004

CONTRACT NO. 7511767-00

DATE 1974

SCALE 8 1/2" X 11" @ 1/4" = 1'

UNIVAC FEDERAL SYSTEMS DIVISION
1000 1000 WASHINGTON DC 20004

CONTRACT NO. 7511767-00

DATE 1974

SCALE 8 1/2" X 11" @ 1/4" = 1'

5 4 3 2